

KEY TELEPHONE SYSTEM NO. IA OR IAI
KEY AND TELEPHONE CIRCUIT
WITH SEPARATELY MOUNTED KEYS ARRANGED FOR PICK-UP,
HOLDING CUT-OFF AND SIGNALING

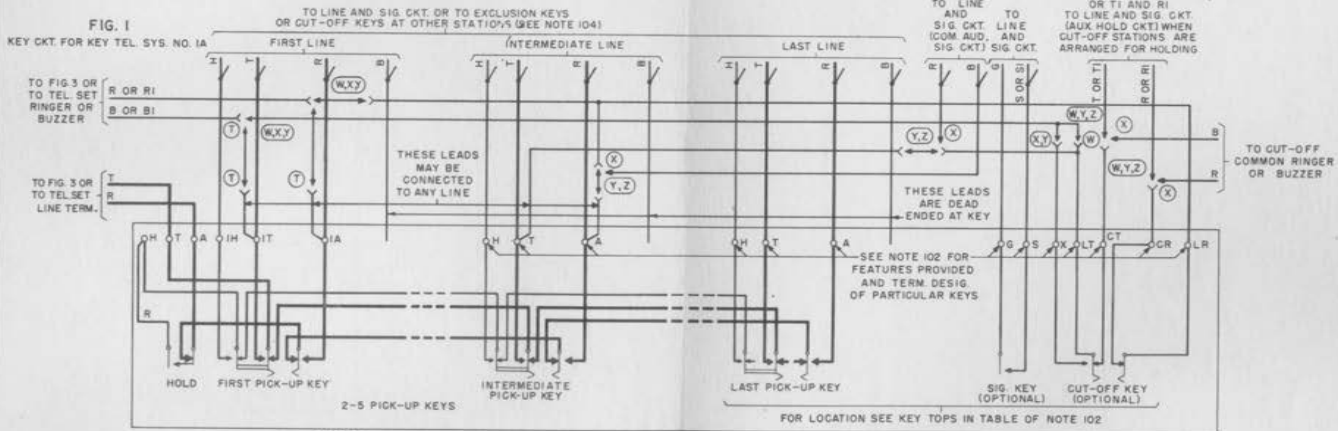
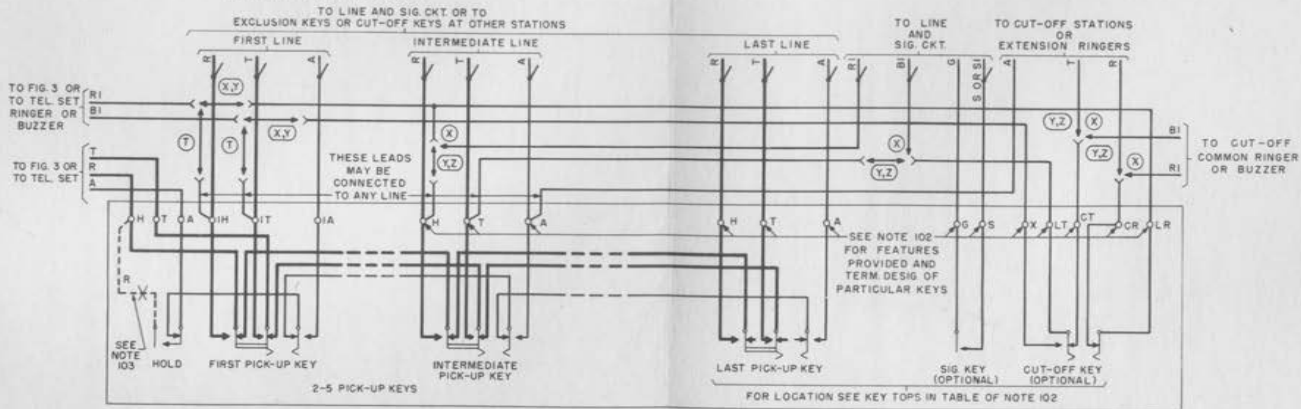


FIG. 2
KEY CKT FOR KEY TEL. SYS. NO. IAI



SD-69207-011 PRINTED IN U.S.A.

		I	DWG. ISS.
		I	Q.D. ISS.

SD-69207-01
ISS. 1

KEY TELEPHONE SYSTEM NO. IA OR IAI
KEY AND TELEPHONE CIRCUIT
WITH SEPARATELY MOUNTED KEYS

TCI Library www.telephonecollectors.info

FIG A

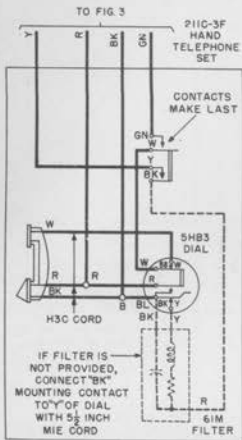


FIG. C

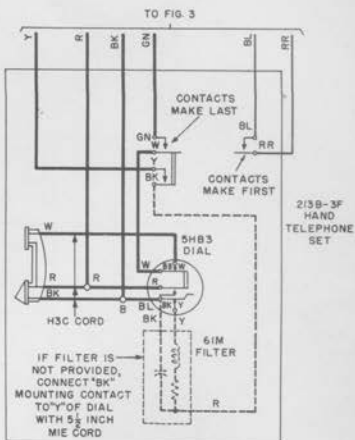


FIG. B

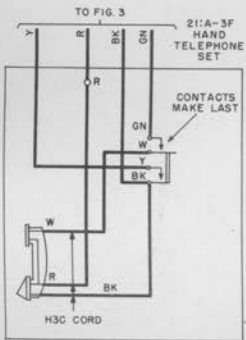
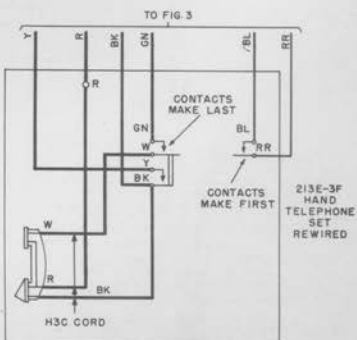


FIG. D



CIRCUIT NOTES

FEATURE OR OPTION			PROVIDE	
			FIG.	QUANTITY
KEY CIRCUIT	FOR KEY TEL. SYS. NO. 1A	1	1 PER STA.	
	FOR KEY TEL. SYS. NO. 1A1	2	1 PER STA.	
SUBSCRIBER SET		3	1 PER STA.	
HAND TEL. SET	FOR KEY TEL. SYS. NO. 1A	DIAL	A	
		MANUAL	B	
	FOR KEY TEL. SYS. NO. 1A1	DIAL	C	
		MANUAL	D	
CUTTING OFF OF EXTENSION RINGER OR STA. OR LISTENING IN LINE CKT.			Z	
CUTTING OFF OF EXTENSION RINGER OR STA. AND TRANSFERRING TO LOCAL RINGER.			Y	
CUTTING OFF OF COMMON RINGER OR BUZZER, OR TRANSFER OF COMMON RINGER OR BUZZER, FROM ANOTHER STA. TO LOCAL STA.			X	
CUTTING OFF OF LISTENING IN RECEIVER.			W	
RINGER AT STA. USED AS COMMON RINGER WITHOUT CUT-OFF.			V	
LINE RINGER			T	

102. PROVIDE KEY IN ACCORDANCE WITH REQ. AS INDICATED IN TABLE A.
103. CUT AND REMOVE RED LEAD, SOLDERED BETWEEN "H" TERMINAL AND PLUNGER SPRING OF HOLD KEY AS FURNISHED, BEFORE USING KEY IN KEY TEL. SYS. NO. 1A1.
104. WHEN A LINE IS CONNECTED THROUGH A CUT-OFF KEY THE ASSOCIATED "T", "R", "B" AND "H" LEADS FROM THE PICKUP KEY MUST CONNECT TO THE LINE AND SIGNALING CKT. (AUXILIARY HOLD CKT.)
105. PROVIDE THE 634CF SUB. SET WHEN THE RINGER IS USED AS A LINE RINGER. EITHER THE 634CF OR 684BA SUB. SET MAY BE PROVIDED WHEN THE RINGER IS USED AS A COMMON RINGER. THE RINGER AND CONDENSER LEADS OF THE 684BA SUB. SET MUST BE RECONNECTED IN ACCORDANCE WITH FIG. 3.

SD-69207-014

PRINTED IN U.S.A.

		I	DWG. ISS.
		I	C. D. ISS.

TABLE A

NUMBER OF LINES AND FEATURES PROVIDED FOR BY KEYS	KEY CODE	DESIGNATIONS OF KEY TERMINALS																										
		LEADS TO TEL. SET			LINE 1			LINE 2			LINE 3			LINE 4			LINE 5			SIGNALING CIRCUIT		CUT-OFF CIRCUIT						
H O P O P O	6021DN	H	T	A	1H	1T	1A	2H	2T	2A	3H	3T	3A															
H O P O P O P O P O	6027DA	H	T	A	1H	1T	1A	2H	2T	2A	3H	3T	3A	4H	4T	4A	5H	5T	5A									
H O P O P O P O P S O	6027DB	H	T	A	1H	1T	1A	2H	2T	2A	3H	3T	3A	4H	4T	4A				S	G							
H O P O P O P O P C O	6028DA	H	T	A	1H	1T	1A	2H	2T	2A	3H	3T	3A	4H	4T	4A							LR	LT	GR	CT	X	

	I	DWG. ISS.
	I	C.D. ISS.

SD-69207-015 PRINTED IN U.S.A.