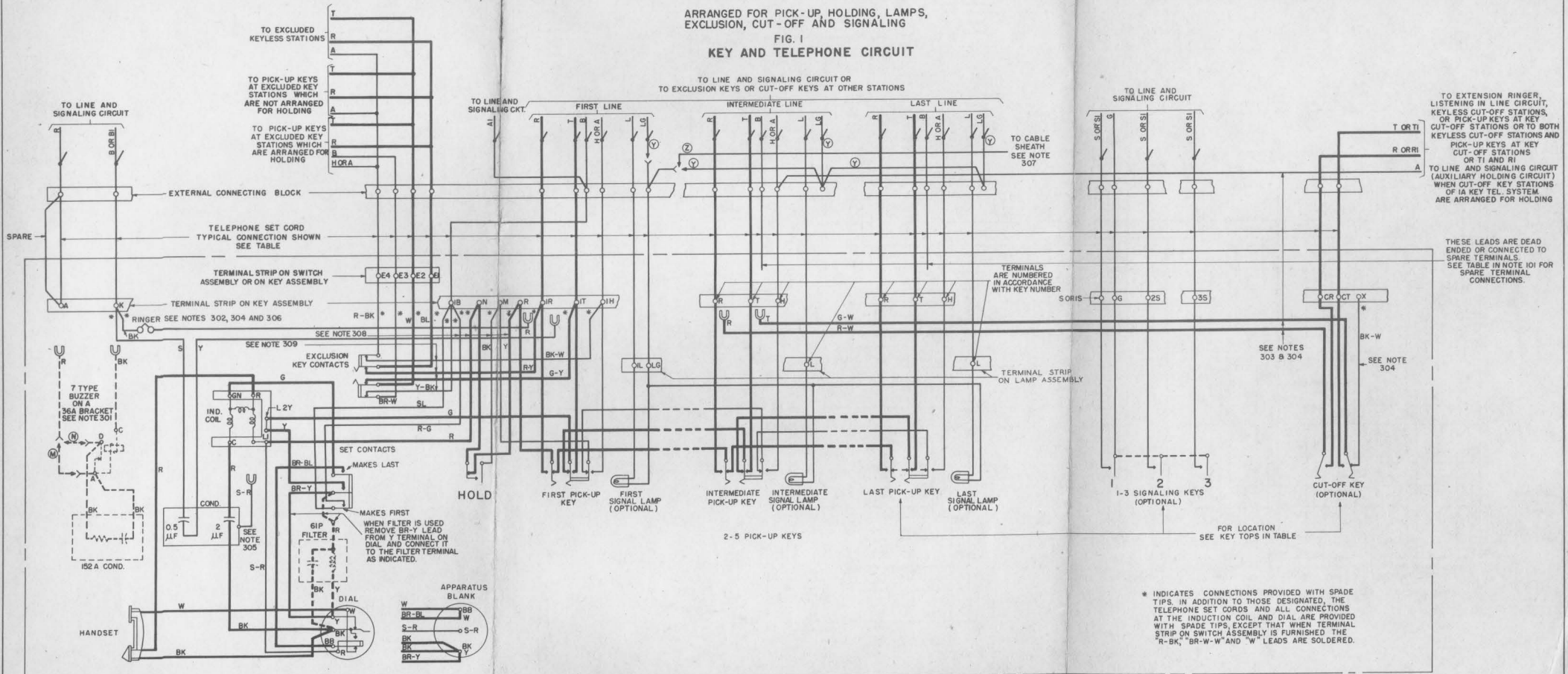


KEY TELEPHONE SYSTEM NO. IA OR IA1
KEY AND TELEPHONE CIRCUIT

ARRANGED FOR PICK-UP, HOLDING, LAMPS,
EXCLUSION, CUT-OFF AND SIGNALING

FIG. 1
KEY AND TELEPHONE CIRCUIT



TO EXTENSION RINGER, LISTENING IN LINE CIRCUIT, KEYLESS CUT-OFF STATIONS, OR PICK-UP KEYS AT KEY CUT-OFF STATIONS OR TO BOTH KEYLESS CUT-OFF STATIONS AND PICK-UP KEYS AT KEY CUT-OFF STATIONS OR TI AND RI

TO LINE AND SIGNALING CIRCUIT (AUXILIARY HOLDING CIRCUIT) WHEN CUT-OFF KEY STATIONS OF IA KEY TEL. SYSTEM ARE ARRANGED FOR HOLDING

THESE LEADS ARE DEAD ENDED OR CONNECTED TO SPARE TERMINALS. SEE TABLE IN NOTE 101 FOR SPARE TERMINAL CONNECTIONS.

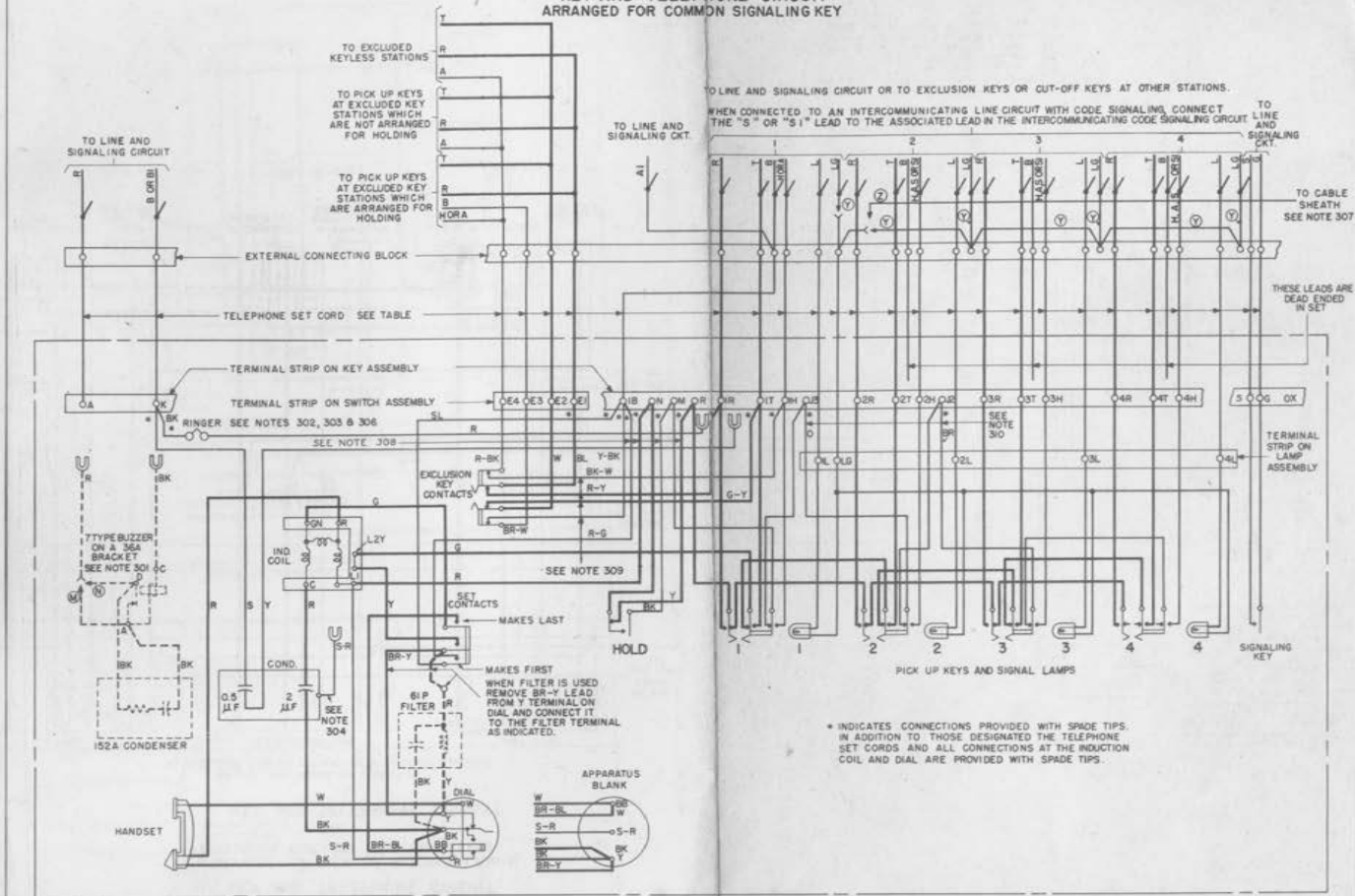
* INDICATES CONNECTIONS PROVIDED WITH SPADE TIPS. IN ADDITION TO THOSE DESIGNATED, THE TELEPHONE SET CORDS AND ALL CONNECTIONS AT THE INDUCTION COIL AND DIAL ARE PROVIDED WITH SPADE TIPS, EXCEPT THAT WHEN TERMINAL STRIP ON SWITCH ASSEMBLY IS FURNISHED THE "R-BK", "BR-W" AND "W" LEADS ARE SOLDERED.

SD-69206-01 PRINTED IN U.S.A.

1 DWG. ISS.
1 C. D. ISS.

SD-69206-01
ISS. 1

FIG. 2
KEY AND TELEPHONE CIRCUIT
ARRANGED FOR COMMON SIGNALING KEY



SD-69206-01 PRINTED IN U.S.A.

1 DWG. ISS.
1 C.D. ISS.