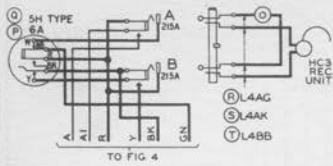


FIG. A

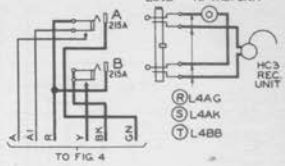
(R) 52A (S) 52D OR (T) 53A, HEAD TEL. SET
 289B NI TRS. UNIT



TO FIG. 4

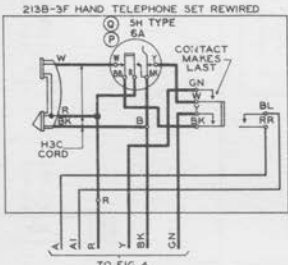
FIG. B

(R) 52A (S) 52D OR (T) 53A, HEAD TEL. SET
 289B NI TRS. UNIT



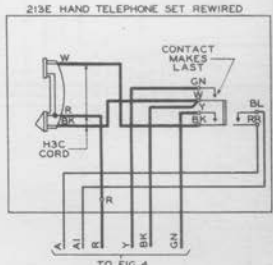
TO FIG. 4

FIG. F



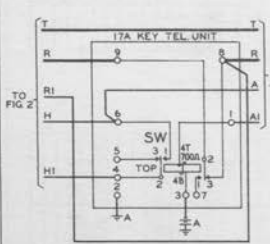
TO FIG. 4

FIG. G



TO FIG. 4

FIG. 3
 HOLD RELAY CIRCUIT

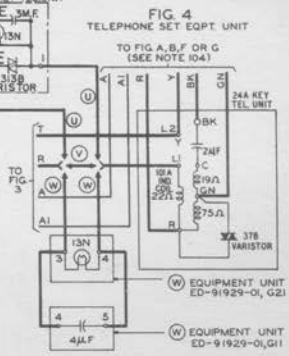


TO FIG. 2

SEE EQPT. NOTE 203



TO FIG. 4
 OR TO
 TEL. SET



(W) EQUIPMENT UNIT
 ED-91929-01, G21

(W) EQUIPMENT UNIT
 ED-91929-01, G11

CIRCUIT NOTES:

101. WHEN FUSES ARE USED FOR ASSOCIATED LINE CIRCUITS PROVIDE FUSES FOR THIS CIRCUIT IN ACCORDANCE WITH THE FOLLOWING TABLE:

DESIG.	AMP.	POTENTIAL FUSED	ONE PER
A	2	TALKING	FIG.3

102. NOT MORE THAN 12 (LINE & BUSY) LAMPS SHALL BE MULTIPLIED TO ANY ONE "L" LEAD. THE LAMPS DESIGNATED (HOLD) SHALL BE REMOVED.

- 103.

FEATURE OR OPTION		PROVIDE	
		FIGS.	APP OR WIR QUANTITY
LINE KEY UNIT	WITH FLASH, RING & HOLD KEY (FOR 1ST 10 LINES) RIGHT ORIGINATING J530055 LEFT ORIGINATING J53005T	1,2	1 PER ATTENDANT
	WITHOUT FLASH RING & HOLD KEY (FOR EACH SUBSEQUENT 10 LINES) RIGHT TO LEFT GROWTH J53005U LEFT TO RIGHT GROWTH J53005W	1	1 OR MORE PER ATTENDANT AS REQ.
HOLD RELAY CIRCUIT		3	1 PER ATTENDANT
TEL. SET EQPT. UNIT		4	1 PER ATTENDANT
WHEN OPERATORS SET IS REQUIRED	IN DIAL AREAS	A	
	IN MANUAL AREAS	B	
FOR LINE CKTS. CONNECTING CENTRAL OFFICES OR P.B.X.		C	
FOR AUTOMATIC TIE LINE		D	
FOR RINGDOWN TIE LINES, STATION LINES OR INTER-COMMUNICATING LINES		E	
WHEN HAND TEL. SET IS REQ.	IN DIAL AREAS	F	V
	IN MANUAL AREAS	G	
WHEN RINGDOWN TIE LINES, STATION LINES, PRIVATE LINES OR INTER-COMMUNICATING LINES ARE USED			Z
WHEN THE LAMPS IN THE LINE KEY UNITS (FIG. 1) ARE NOT MULTIPLIED TO 51A LAMPS IN KEY TEL SETS			A3 LAMP & Y
WHEN THE LAMPS IN THE LINE KEY UNITS (FIG. 1) ARE MULTIPLIED TO 51A LAMPS IN KEY TEL. SETS AND THE POWER SUPPLY FOR THESE LAMPS IS (SEE NOTE 106)	9-11V 60~ AC		G2 LAMP & X
	8,9,10,11 OR 13 CELL. BAT.		A3 LAMP & X
	23 CELL. BAT.		K2 LAMP & X
WHEN AN OPERATOR'S HEAD TEL. SET CAN BE CONNECTED TO A CENTRAL OFFICE OR PBX LINE ON WHICH THE TOTAL CONDUCTOR LOOP TO THE CENTRAL OFFICE OR NEAREST LONG LINE CKT. (INCLUDING BOTH STATION AND CENTRAL OFFICE CONDUCTOR LOOPS IN THE CASE OF PBX.) IS LESS THAN 300 OHMS.			U
WHEN U' OPTION IS NOT REQUIRED			V
HEAD	52 WITHOUT RETRACTILE CORD		R
TEL. SET	TYPE WITH RETRACTILE CORD		S
	53A		T

SD-69196-013 PRINTED IN U.S.A.

2-D	1	DWG. ISS.
2-D	1	C.D. ISS.

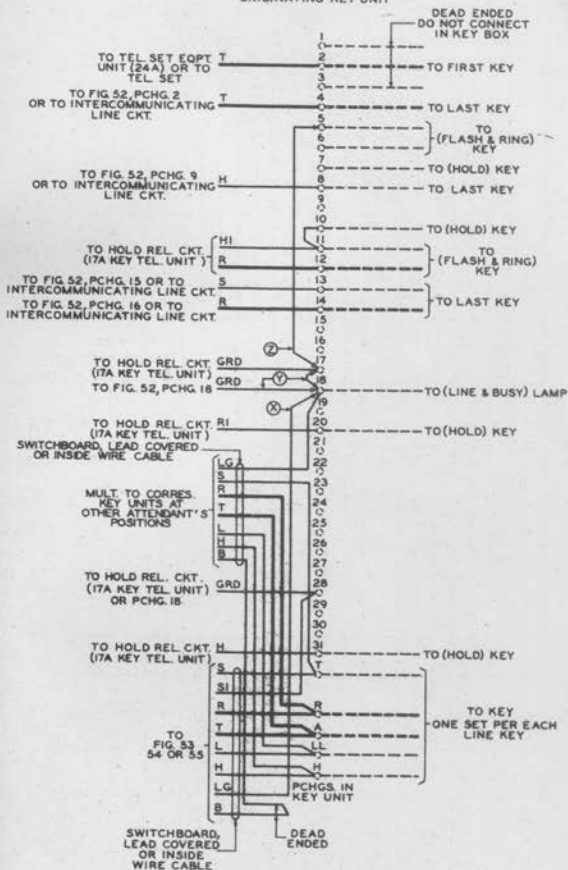
CIRCUIT NOTES: (CONT.)

104. THE WIRING BETWEEN FIGS. 4 AND A, B, F OR G SHALL BE IN ACCORDANCE WITH BSP SECTION C63.256 "MAIN AND EXTENSION STATIONS—CONNECTION AND WIRING LIMITATIONS" AS DESCRIBED FOR 4 WIRE AST COMMON BAT. SUBSCRIBER SET CIRCUITS.
105. WHEN EXPERIENCE INDICATES THAT AN EXCESSIVE AMOUNT OF A3 LAMPS BURN OUT, THE TELEPHONE COMPANY MAY REPLACE ALL LAMPS AT THE STATION BY A1 LAMPS PROVIDING THE ILLUMINATION FROM A1 LAMPS IS SATISFACTORY.
106. WHEN THE A3 OR G2 LAMP IS USED THE "L" AND "LG" LEADS SHALL BE CONNECTED DIRECTLY TO THE "L" & "LG" LEADS IN THE LINE CIRCUIT. WHEN THE K2 LAMP IS USED THE "L" LEAD SHALL BE CONNECTED TO THE "L" LEAD FROM A 350Ω RES. IN A 22D KEY TEL. UNIT AND THE "LG" LEAD TO THE "LG" LEAD IN THE LINE CIRCUIT.

RECORD OF FIGURES, WIRING, AND APPARATUS CHANGES						
CHANGED ON ISS.	IF JOB RECORDS DO NOT SPECIFY	THIS OPTION WAS FURN.	SEE NOTE	USE IN CIRCUIT		
				STD.	ABM	M.D.
2-D			101	UBV	W	
2-D	R, SORT	RORS	101	R, SBY		
2-D	PORG	Q		P	Q	



FIG 51
(FOR FIGS. 1 & 2)
ORIGINATING KEY UNIT



SD-69196-016 PRINTED IN U.S.A.

2-D	1	DWG. ISS.
2-D	1	C.D. ISS.

FIG. 52
(FOR FIG. 1)
SUPPLEMENTARY KEY UNIT

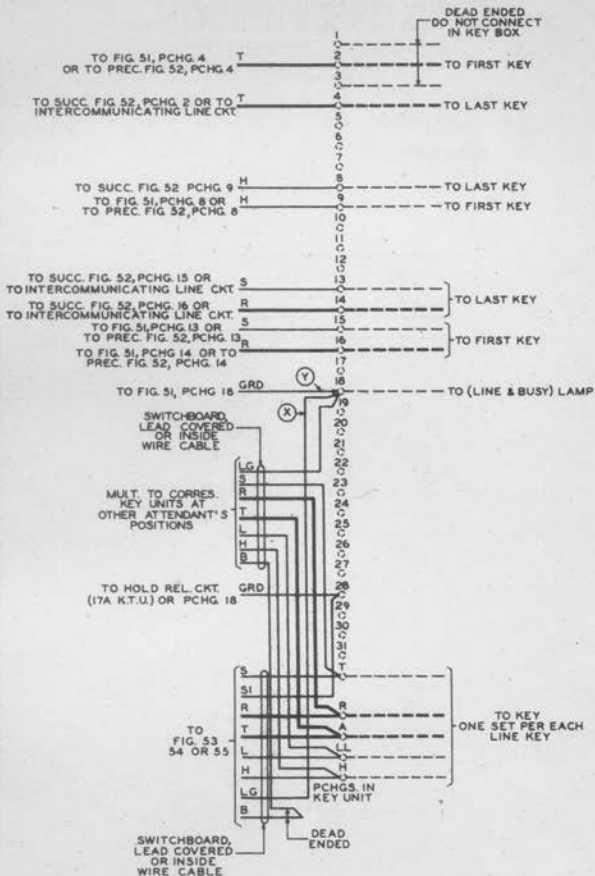


FIG. 53
(FOR FIG. C)

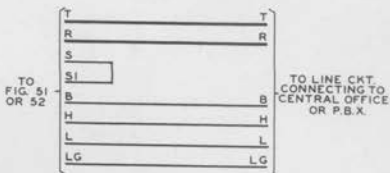


FIG. 54
(FOR FIG. D)

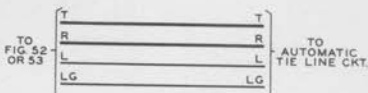
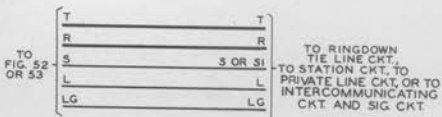


FIG. 55
(FOR FIG. E)



EQUIPMENT NOTES:

201. IN EACH KEY BOX, LEADS ARE PROVIDED FROM TERMINALS 1 AND 3 AND LEFT DEAD ENDED AT THE TIME OF MANUFACTURE. SINCE THIS SERVICE DOES NOT REQUIRE THESE LEADS THEY SHOULD BE LEFT DEAD ENDED.
202. THE "a" SPRINGS OF THE LINE KEYS AT EACH ATTENDANT'S POSITION ARE USED FOR A "CHAIN CONTACT" CIRCUIT, STARTING AT THE TELEPHONE RELAY EQUIPMENT, PASSING THROUGH THE TELEPHONE SUBSET AND TO THE FIRST LINE KEY IN THE ORIGINATING KEY UNIT, THENCE THROUGH THE KEYS, AND, WHEN SPECIFIED, TO THE INTERCOMMUNICATING LINE CIRCUIT (THE TYPE WITHOUT KEY).
203. NOT MORE THAN TWO 32A KEY TEL. UNITS SHOULD BE MOUNTED IN ONE 105 TYPE APPARATUS BOX WITH A SPACE DIRECTLY ABOVE EACH UNIT VACANT TO AVOID OVERHEATING. IF ONLY ONE UNIT IS PROVIDED IT SHOULD BE MOUNTED IN THE BOTTOM OF THE BOX WITH A VACANT SPACE DIRECTLY ABOVE IT. 22 TYPE KEY TEL. UNITS SHOULD NOT BE MOUNTED IN THE SAME BOX.

SD-69196-018 PRINTED IN U.S.A.

	2-D	1	DWG. ISS.
	2-D	1	C.D. ISS.