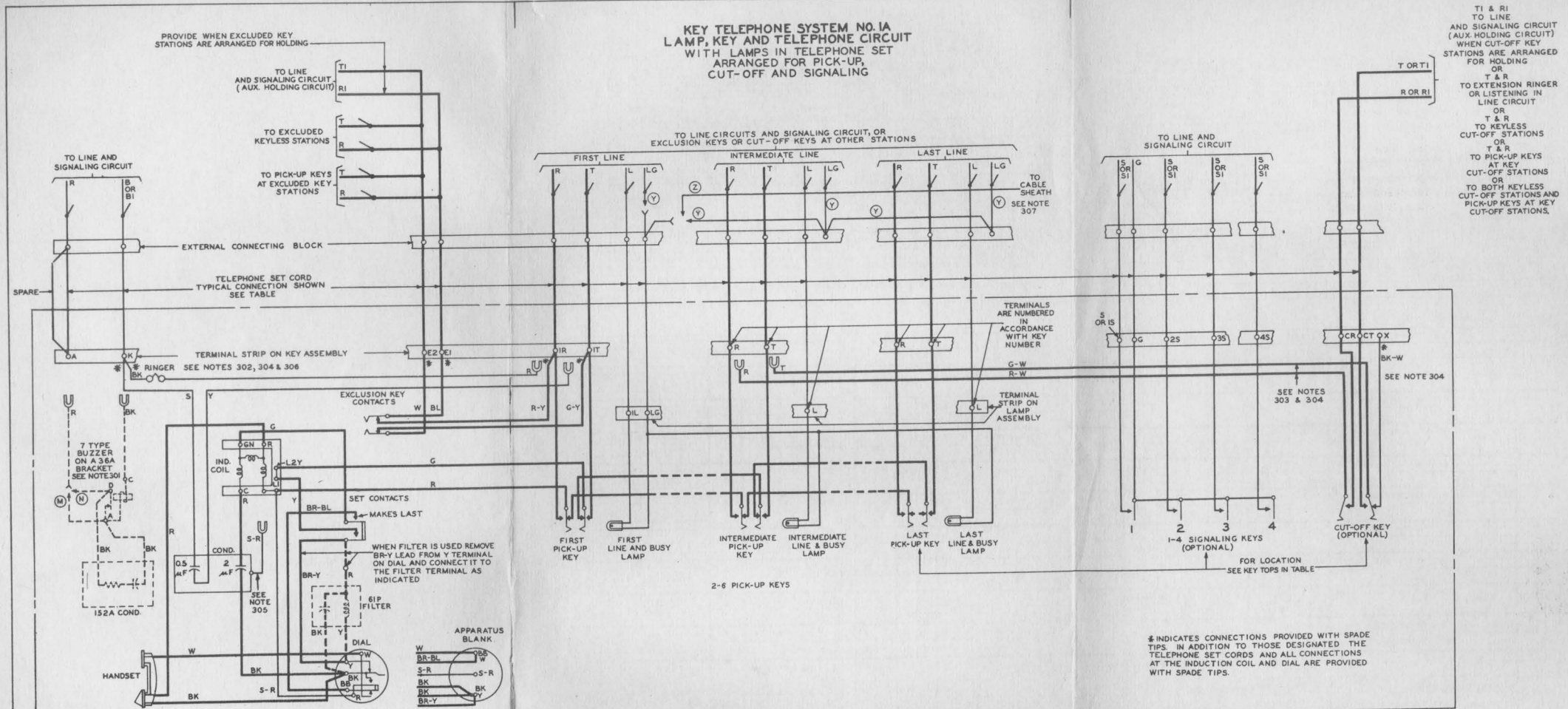


**KEY TELEPHONE SYSTEM NO. 1A  
LAMP, KEY AND TELEPHONE CIRCUIT  
WITH LAMPS IN TELEPHONE SET  
ARRANGED FOR PICK-UP,  
CUT-OFF AND SIGNALING**



TI & RI  
TO LINE  
AND SIGNALING CIRCUIT  
(AUX. HOLDING CIRCUIT)  
WHEN CUT-OFF KEY  
STATIONS ARE ARRANGED  
FOR HOLDING  
OR  
T & R  
TO EXTENSION RINGER  
OR LISTENING IN  
LINE CIRCUIT  
OR  
T & R  
TO KEYLESS  
CUT-OFF STATIONS  
OR  
T & R  
TO PICK-UP KEYS  
AT KEY  
CUT-OFF STATIONS  
OR  
TO BOTH KEYLESS  
CUT-OFF STATIONS AND  
PICK-UP KEYS AT KEY  
CUT-OFF STATIONS.

# INDICATES CONNECTIONS PROVIDED WITH SPADE TIPS IN ADDITION TO THOSE DESIGNATED THE TELEPHONE SET CORDS AND ALL CONNECTIONS AT THE INDUCTION COIL AND DIAL ARE PROVIDED WITH SPADE TIPS.

SD-39188-01 PRINTED IN U.S.A.

1 DWG. ISS.  
1 C.D. ISS.

SD-69188-01  
ISS. 1

TCI Library www.telephon collectors.info  
KEY TELEPHONE SYSTEM NO. 1A  
KEY AND TELEPHONE SET WITH LAMPS

CIRCUIT NOTES:  
 101. PROVIDE THE KEY TELEPHONE SET IN ACCORDANCE WITH REQUIREMENTS AS INDICATED IN THE FOLLOWING TABLE. THE CORD CONDUCTOR COLORS ARE SHOWN UNDER THE DESIGNATIONS OF THE TERMINALS IN THE SET.

NUMBER OF LINES AND FEATURES PROVIDED FOR BY KEYS	WITH EXCLUS. KEY	CODES		CORD CONDUCTOR COLORS										BUZZER SIGNALING						EXTENSION OR HEADSET CUT-OFF				TO EXCLUDED STATIONS		TO LINE & SIGNAL CKT.		LINE AND BUSY LAMPS						SPARE		
		KEY TEL. SET	TEL. SET CORD	TO LINE 1 RING	TO LINE 1 TIP	TO LINE 2 RING	TO LINE 2 TIP	TO LINE 3 RING	TO LINE 3 TIP	TO LINE 4 RING	TO LINE 4 TIP	TO LINE 5 RING	TO LINE 5 TIP	TO LINE 6 RING	TO LINE 6 TIP	GND.	BUZZ 1	BUZZ 2	BUZZ 3	BUZZ 4	RING	TIP	E1	E2	A	A	LG	IL	2L	3L	4L	5L	6L		A	E1
P O P O P O P O	NO	444AA	444AC	D16B	R	G	Y	BK	BL	W	BR-R	BR-G																								R-Y
	YES	445AA	445AC	D18C	R	G	Y	BK	BL	W	BR-R	BR-G																								BR-BL
P O P O P O S O	NO	445BA	445BC	D16B	R	G	Y	BK	BL	W																										
	YES	445CA	445CC	D16B	R	G	Y	BK	BL	W																										
P O P O P O C O	NO	445DA	445DC	D16B	R	G	Y	BK																												
	YES	445EA	445EC	D18C	R	G	Y	BK	BL	W																										
P O P O P O P O P O	NO	445FA	445FC	D16B	R	G	Y	BK																												
	YES	445GA	445GC	D16B	R	G	Y	BK	BL	W	BR-R	BR-G																								
P O P O P O P O S O	NO	445HA	445HC	D16B	R	G	Y	BK	BL	W																										
	YES	445IA	445IC	D16B	R	G	Y	BK	BL	W																										
P O P O P O P O C O	NO	445JA	445JC	D16B	R	G	Y	BK	BL	W																										
	YES	445KA	445KC	D16B	R	G	Y	BK	BL	W																										
P O P O P O P O S O C O	NO	445LA	445LC	D16B	R	G	Y	BK	BL	W																										
	YES	445MA	445MC	D16B	R	G	Y	BK	BL	W																										
P O P O P O P O S O C O	NO	445NA	445NC	D16B	R	G	Y	BK	BL	W																										
	YES	445OA	445OC	D16B	R	G	Y	BK	BL	W																										
P O P O P O P O S O S O	NO	445PA	445PC	D16B	R	G	Y	BK	BL	W																										
	YES	445QA	445QC	D16B	R	G	Y	BK	BL	W																										

INFORMATION NOTES:

- 301. PROVIDE "M" WIRING WHEN THE BUZZER IS TO OPERATE ON 60 CYCLE A-C AND PROVIDE "N" WIRING WHEN THE BUZZER IS TO OPERATE ON D-C.
- 302. SETS ARE WIRED IN THE SHOP WITH RED RINGER AND YELLOW CONDENSER LEADS CONNECTED TO "1R" AND "1T" TERMINALS RESPECTIVELY FOR SET RINGER TO BE USED AS A LINE RINGER ON LINE 1. THEY MAY BE CONNECTED BY THE INSTALLER TO OTHER "R" AND "T" TERMINALS. WHEN THE RINGER IS USED FOR A PRIVATE LINE OR AS A COMMON RINGER OR WHEN A BUZZER IS USED, CHANGE THE CORD CONDUCTOR SHOWN CONNECTED TO TERMINAL "A" IN THE COLUMN UNDER THE ASTERISK IN THE TABLE OF NOTE 101 TO TERMINAL "K" INSTEAD.
- 303. SETS ARE WIRED IN THE SHOP WITH THE G-W AND R-W LEADS FROM THE CUT-OFF KEY CONNECTED TO TERMINALS "2T" AND "2R" RESPECTIVELY TO CUT-OFF EXTENSION STATIONS FROM LINE 2. THESE LEADS MAY BE CONNECTED BY THE INSTALLER TO OTHER "R" AND "T" TERMINALS.
- 304. MAKE RINGER, BUZZER, AND CUT-OFF CONNECTIONS AS FOLLOWS:

COLOR OF WIRES IN SET	RINGER AND CONDENSER CONNECTIONS		CUT-OFF CONNECTIONS		
	R	Y	BK-W	G-W	R-W
SET RINGER USED AS INDIVIDUAL LINE RINGER ON T AND R OF ANY LINE, EXCEPT PRIVATE LINES	R	T	-	-	-
SET RINGER USED FOR A PRIVATE LINE OR AS COMMON RINGER, OR BUZZER USED AS COMMON OR INTERCOMMUNICATING SIGNAL	A	K	-	-	-
SET RINGER USED AS A LINE RINGER WHEN CUT-OFF KEY IS OPERATED TO SUBSTITUTE SET RINGER FOR EXTERNAL STATION OR RINGER. CONNECT S-R COND LEAD TO R OF LINE	X	T	X	R	T
CUT-OFF KEY ON T AND R OF ANY LINE EXCEPT WHEN ON LINE 1 WITH EXCLUSION KEY	-	-	X	T	R
CUT-OFF AND EXCLUSION KEYS BOTH ASSOCIATED WITH LINE 1	-	-	X	E2	E1

SD-69188-01 PRINTED IN U.S.A.

I DWG. ISS.  
I C.D. ISS.

304. (CONT)

HEAD RECEIVERS USED AS LISTENING IN SETS	RINGER AND CONDENSER CONNECTIONS		CUT-OFF CONNECTIONS	
	R	Y	X	GN
CUT-OFF SET RINGER OR BUZZER WHEN USED AS A PRIVATE LINE COMMON OR INTERCOMMUNICATING SIGNAL	CT	K	X	A
CUT-OFF SET RINGER WHEN USED AS A LINE RINGER	CR	CT	X	T
RINGER IN SET NOT USED.	A	A	-	-

- 305. CONNECT S-R CONDENSER LEADS AS FOLLOWS: WHEN SET RINGER IS USED FOR A COMMON RINGER OR WHEN A BUZZER IS USED, CONNECT S-R CONDENSER LEAD TO TERMINAL "L1". WHEN SET RINGER IS USED FOR A LINE RINGER CONNECT S-R CONDENSER LEAD TO "R" TERMINAL OF LINE WITH WHICH THE RINGER IS ASSOCIATED.
- 306. TO EMPLOY THE EXCLUSION KEY AS A MEANS TO CUT-OFF A COMMON RINGER OR BUZZER IN A TELEPHONE SET MAKE THE FOLLOWING CONNECTIONS: R-Y AND G-Y EXCLUSION KEY LEADS TO TERMINAL "A". BL EXCLUSION KEY LEAD TO TERMINAL "E2". RED RINGER OR BUZZER LEAD TO TERMINAL "E2". BLACK RINGER OR BUZZER LEAD, YELLOW AND SLATE CONDENSER LEADS, TO TERMINAL "K".
- 307. PROVIDE "V" WIRING FOR METALLIC RETURN (METALLIC RETURN SHALL ALWAYS BE PROVIDED WHEN THE BATTERY IS NOT LOCATED IN THE SAME BLDG. AS THE KEY TEL. SYSTEM OR WHEN IT IS LOCATED IN THE SAME BLDG. AND IT IS CHARGED OVER METALLIC RETURN FEEDERS. METALLIC RETURN SHALL ALSO BE USED ON A-C SUPPLY). PROVIDE "Z" WIRING FOR CABLE SHEATH RETURN (CABLE SHEATH RETURN SHALL ONLY BE USED WHEN THE BATTERY IS LOCALLY GROUNDED AND LOCATED IN THE SAME BLDG. AS THE KEY TEL. SYSTEM).