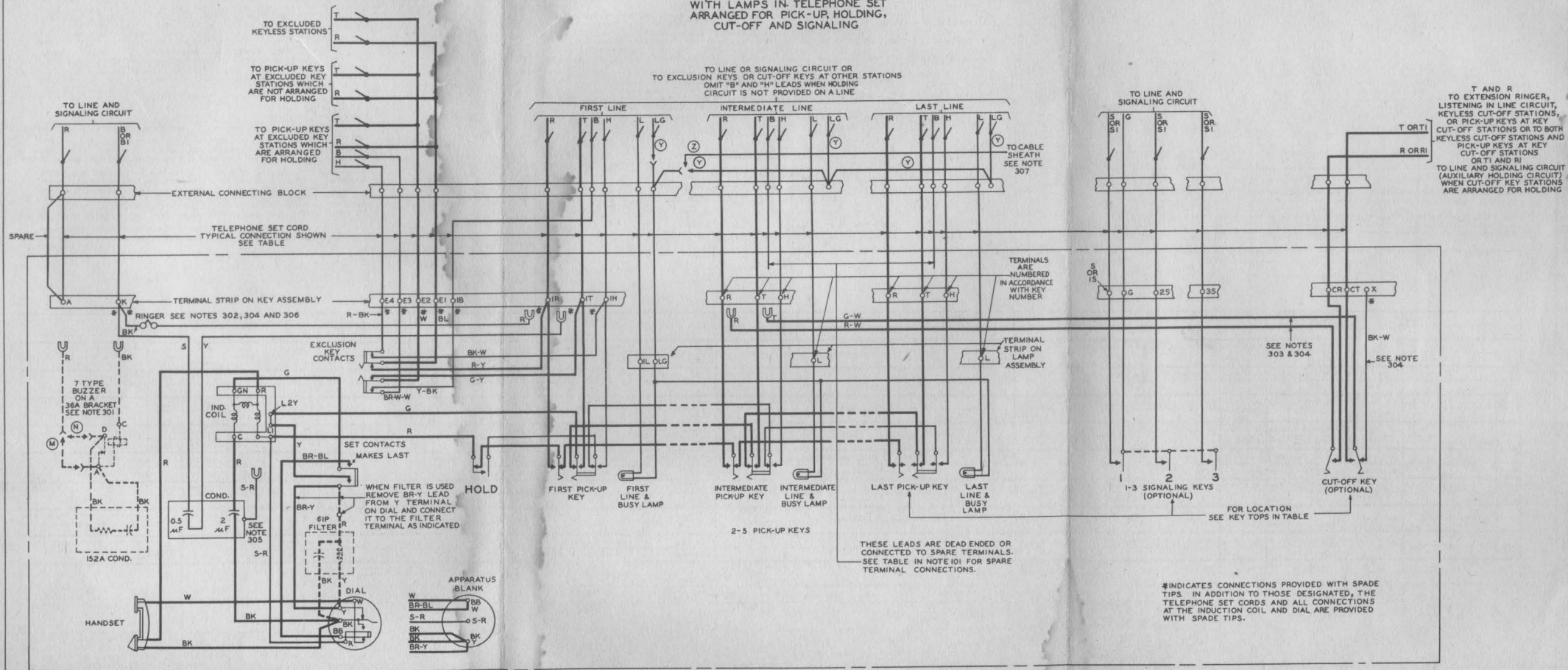


KEY TELEPHONE SYSTEM NO. 1A
LAMP KEY AND TELEPHONE CIRCUIT
WITH LAMPS IN TELEPHONE SET
ARRANGED FOR PICK-UP, HOLDING,
CUT-OFF AND SIGNALING



TO LINE OR SIGNALING CIRCUIT OR
TO EXCLUSION KEYS OR CUT-OFF KEYS AT OTHER STATIONS
OMIT "B" AND "H" LEADS WHEN HOLDING
CIRCUIT IS NOT PROVIDED ON A LINE

TO LINE AND
SIGNALING CIRCUIT

T AND R
TO EXTENSION RINGER,
LISTENING IN LINE CIRCUIT,
KEYLESS CUT-OFF STATIONS,
OR PICK-UP KEYS AT KEY
CUT-OFF STATIONS OR TO BOTH
KEYLESS CUT-OFF STATIONS AND
PICK-UP KEYS AT KEY
CUT-OFF STATIONS
OR T1 AND R1
TO LINE AND SIGNALING CIRCUIT
(AUXILIARY HOLDING CIRCUIT)
WHEN CUT-OFF KEY STATIONS
ARE ARRANGED FOR HOLDING

TERMINALS
ARE
NUMBERED
IN ACCORDANCE
WITH KEY
NUMBER

TERMINAL
STRIP ON
LAMP
ASSEMBLY

SEE NOTES
303 & 304

SEE NOTE
304

THESE LEADS ARE DEAD ENDED OR
CONNECTED TO SPARE TERMINALS.
SEE TABLE IN NOTE 101 FOR SPARE
TERMINAL CONNECTIONS.

⚡ INDICATES CONNECTIONS PROVIDED WITH SPADE
TIPS. IN ADDITION TO THOSE DESIGNATED, THE
TELEPHONE SET CORDS AND ALL CONNECTIONS
AT THE INDUCTION COIL AND DIAL ARE PROVIDED
WITH SPADE TIPS.

SD-69187-01 PRINTED IN U.S.A.

I DWG. ISS.
I C.D. ISS.

SD-69187-01
ISS. 1

TCI Library www.telephon collectors.info

KEY AND TELEPHONE SET WITH LAMPS AND HOLD KEY

