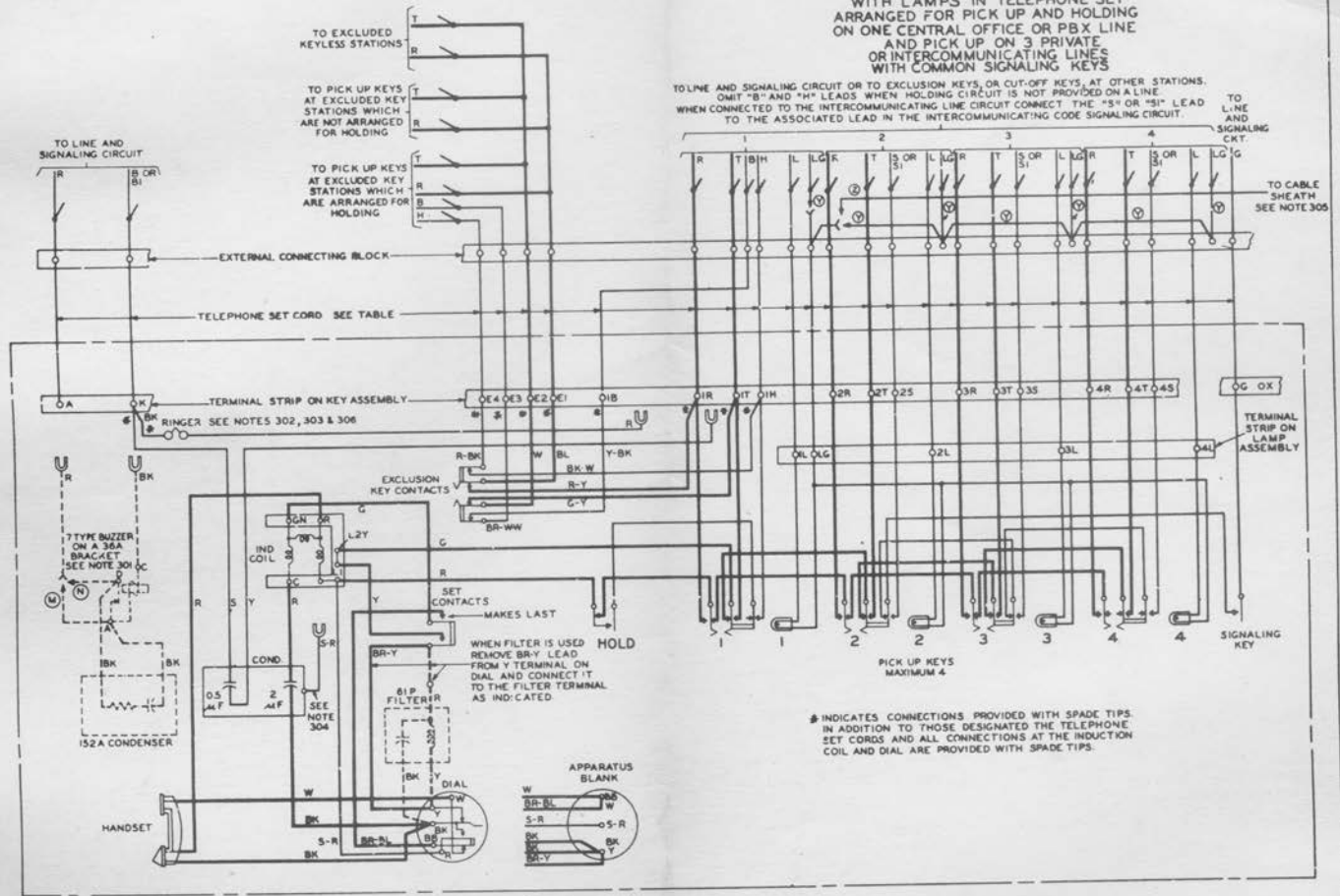


**KEY TELEPHONE SYSTEM NO. 1A
LAMP, KEY AND TELEPHONE CIRCUIT
WITH LAMPS IN TELEPHONE SET
ARRANGED FOR PICK UP AND HOLDING
ON ONE CENTRAL OFFICE OR PBX LINE
AND PICK UP ON 3 PRIVATE
OR INTERCOMMUNICATING LINES
WITH COMMON SIGNALING KEYS**

TO LINE AND SIGNALING CIRCUIT OR TO EXCLUSION KEYS, OR CUT-OFF KEYS, AT OTHER STATIONS.
OMIT "B" AND "H" LEADS WHEN HOLDING CIRCUIT IS NOT PROVIDED ON A LINE.
WHEN CONNECTED TO THE INTERCOMMUNICATING LINE CIRCUIT CONNECT THE "S" OR "H" LEAD
TO THE ASSOCIATED LEAD IN THE INTERCOMMUNICATING CODE SIGNALING CIRCUIT.



* INDICATES CONNECTIONS PROVIDED WITH SPADE TIPS.
IN ADDITION TO THOSE DESIGNATED THE TELEPHONE
SET CORDS AND ALL CONNECTIONS AT THE INDUCTION
COIL AND DIAL ARE PROVIDED WITH SPADE TIPS.

SD-69186-01 PRINTED IN U.S.A.

1 DWG. ISS.
1 C.D. ISS.

SD-69186-01
ISS 1

KEY TELEPHONE SYSTEM NO. 1A
KEY AND TELEPHONE SET WITH LAMPS
AND COMMON SIGNALING KEY

CIRCUIT NOTES

101 PROVIDE THE KEY TELEPHONE SET IN ACCORDANCE WITH REQUIREMENTS AS INDICATED IN THE FOLLOWING TABLE. THE CORD CONDUCTOR COLORS ARE SHOWN UNDER THE DESIGNATIONS OF THE TERMINALS IN THE SET EXCEPT WHERE "0" APPEARS WHICH INDICATES THAT THE CONDUCTOR IS DEAD-ENDED IN THE SET.

NUMBER OF LINES AND FEATURES PROVIDED FOR BY KEYS	WITH EXCLUS KEY	CODES			CORD	TO LINE 1			TO LINE 2			TO LINE 3			TO LINE 4				SIG	TO EXCLUDED STATIONS				TO LINE & SIGNAL CMT		SPARE	LINE & BUSY LAMPS										
		MANUAL	DIAL (500)	D28A		RING	TIP	BAL	HOLD	RING	TIP	SIG	RING	TIP	SIG	RING	TIP	SIG		GRD	RING	TIP	BAL	HOLD	R		B	A	D	D	D	X	LG	IL	2L	3L	4L
						DESIGNATIONS OF THE TERMS IN THE SET (SEE NOTES 302 & 303)																1	2	3	4												
	YES	465JA	465JC	D28A	R	G	Y	BK	BL	W	BR-G	BR-Y	BR-BK	BR-W	R-G	R-Y	R-BL	G-W	R-W	G-Y	G-BK	G-BL	Y-BL	Y-W	BR-R	BR-BL	R-BK	Y-BK	BK-W	BL-W	BR-BL	SL	BR-SL				

INFORMATION NOTES

301 PROVIDE "M" WIRING WHEN THE BUZZER IS TO OPERATE ON 60 CYCLE A-C AND PROVIDE "N" WIRING WHEN THE BUZZER IS TO OPERATE ON D-C.

302 SETS ARE WIRED IN THE SHOP WITH RED RINGER AND YELLOW CONDENSER LEADS CONNECTED TO "R" AND "Y" TERMINALS RESPECTIVELY FOR SET RINGER TO BE USED AS A LINE RINGER ON LINE 1. THEY MAY BE CONNECTED BY THE INSTALLER TO OTHER "R" AND "Y" TERMINALS. WHEN THE RINGER IS USED FOR A PRIVATE LINE OR AS A COMMON RINGER OR WHEN A BUZZER IS USED CHANGE THE CORD CONDUCTOR SHOWN CONNECTED TO TERMINAL "A" IN THE COLUMN UNDER THE ASTERISK * IN THE TABLE OF NOTE 101 TO TERMINAL "R" INSTEAD.

303 MAKE RINGER AND BUZZER CONNECTIONS AS FOLLOWS.

COLOR OF LEADS IN SET	SET TERMINALS	RINGER AND CONDENSER CONNECTIONS	
		R	Y
SET RINGER USED AS INDIVIDUAL LINE RINGER ON T AND R OF ANY LINE EXCEPT PRIVATE LINES		R	T
SET RINGER USED FOR A PRIVATE LINE OR AS COMMON RINGER OR BUZZER USED AS COMMON OR INTER-COMMUNICATING SIGNAL		A	K

304 CONNECT S-R CONDENSER LEAD AS FOLLOWS

WHEN SET RINGER IS USED FOR A COMMON RINGER OR WHEN A BUZZER IS USED, CONNECT S-R CONDENSER LEAD TO TERMINAL "R".
WHEN SET RINGER IS USED FOR A LINE RINGER CONNECT S-R CONDENSER LEAD TO "R" TERMINAL OF LINE WITH WHICH THE RINGER IS ASSOCIATED.

305 PROVIDE "Y" WIRING FOR METALLIC RETURN (METALLIC RETURN SHALL ALWAYS BE PROVIDED WHEN THE BATTERY IS NOT LOCATED IN THE SAME BLDG AS THE KEY TEL SYSTEM OR WHEN IT IS LOCATED IN THE SAME BLDG AND IS CHARGED OVER METALLIC RETURN FEEDERS. METALLIC RETURN SHALL ALSO BE USED ON A-C SUPPLY.)

PROVIDE "Z" WIRING FOR CABLE SHEATH RETURN (CABLE SHEATH RETURN SHALL ONLY BE USED WHEN THE BATTERY IS LOCALLY GROUNDED AND IS LOCATED IN THE SAME BLDG AS KEY TEL SYSTEM).

306 TO EMPLOY THE EXCLUSION KEY AS MEANS TO CUT-OFF A COMMON RINGER OR BUZZER IN A TELEPHONE SET MAKE THE FOLLOWING CONNECTIONS:

R-Y AND G-Y EXCLUSION KEY LEADS TO TERMINAL "A".
BL EXCLUSION KEY LEAD TO TERMINAL "E2".
CORD CONDUCTOR LISTED IN TABLE OF NOTE 101 AS CONNECTED TO TERMINAL "E2" CHANGE TO TERMINAL "E1".
RED RINGER OR BUZZER LEAD TO TERMINAL "E2".
BLACK RINGER OR BUZZER LEAD, YELLOW AND SLATE CONDENSER LEADS TO TERMINAL "K".

SD-69186-01 PRINTED IN U.S.A.

1 DWG. ISS.
1 C.D. ISS.