

STATION SYSTEMS
KEY TELEPHONE SYSTEM NO. 1A
LISTENING-IN CIRCUITS

FIG. 2

LISTENING-IN PICKUP
AND NON-LOCKING
TALK-FRY

TO CENT. OFFICE OR
PBX LINE CXT DIRECT
OR THRU PICK-UP KEYS
IN TEL SET OR EXT
PICK-UP KEYS

4 CONDUCTOR
CORD INSTEAD
OF 2 CONDUCTOR
CORD WITH 302
TYPE TEL SET

CONNECT AS REQ
FOR RINGER

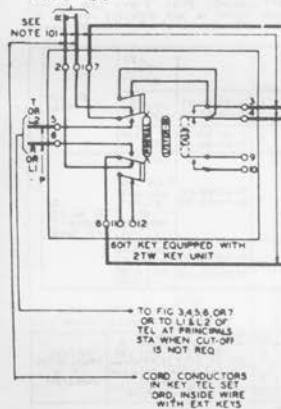


FIG. 3
MODIFICATION OF SD-69129-01 OR SD-69104-01 USING
EXCLUSION KEY TO CUT-OFF HANDSET "LISTENING-IN"

FIG. 1

LISTENING-IN CIRCUIT
WITH HANDSET AT
SECRETARY'S STATION
MODIFICATION OF KEY
TEL SET OR 302 TYPE
TEL SET WITH OR
WITHOUT EXT KEYS

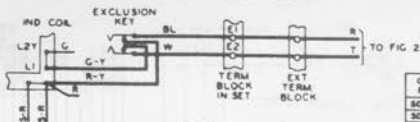
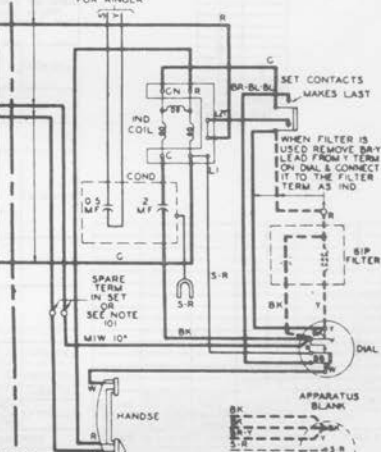
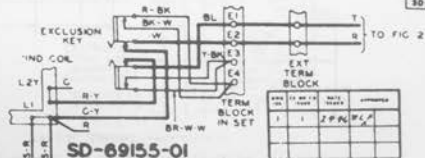


FIG. 4

MODIFICATION OF SD-69128-01 OR SD-69098-01 USING
EXCLUSION KEY TO CUT-OFF HANDSET "LISTENING-IN"

| CIRCUITS MODIFIED BY THIS DRAWING | |
|--------------------------------------|--|
| SD-69091-01 | |
| SD-69095-01 | |
| SD-69104-01 | |
| SD-69128-01 | |
| SD-69129-01 | |
| SD-69132-01 | |
| SD-69133-01 | |



SD-69155-01

| REV | BY | CHKD | DATE | REASON | APPROVED |
|-----|----|------|------|--------|----------|
| 1 | 1 | JPN | PLP | | |

FIG. 5
 MODIFICATION OF SD-69128-01 OR SD-69129-01 USING
 "CUT-OFF" KEY TO CUT-OFF HANDSET "LISTENING-IN"

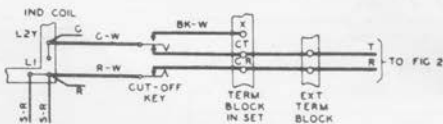


FIG. 6
 MODIFICATION OF SD-69132-01 OR SD-69133-01 USING
 "CUT-OFF" KEY TO CUT-OFF HANDSET "LISTENING-IN"

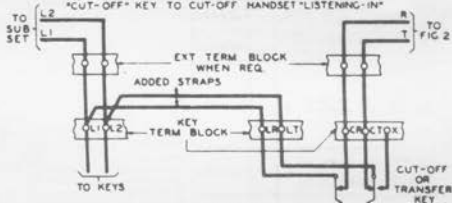


FIG. 7
 CONNECTIONS REQ FOR
 SEPARATELY MOUNTED CUT-OFF KEY
 6017 KEY EQUIPPED WITH 2TW KEY UNIT

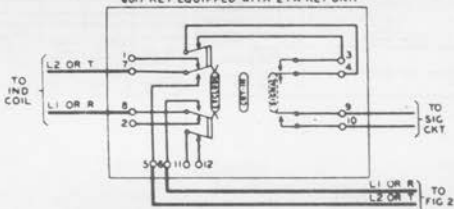


FIG. 8
 LISTENING-IN CIRCUIT WITH
 HEAD RECEIVERS AT SECRETARY'S STATION
 MODIFICATION OF SD-69091-01

