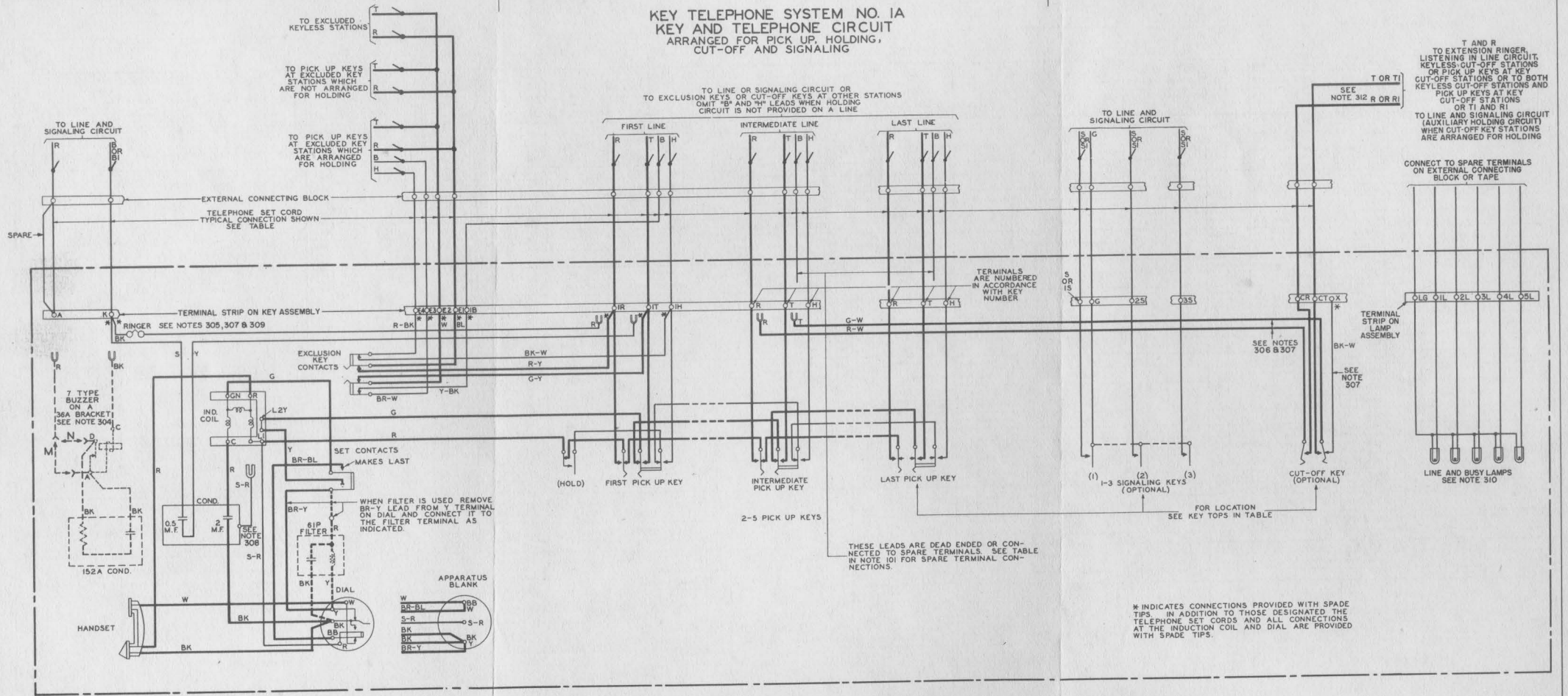


KEY TELEPHONE SYSTEM NO. 1A
KEY AND TELEPHONE CIRCUIT
ARRANGED FOR PICK UP, HOLDING,
CUT-OFF AND SIGNALING



SD-69128-01 PRINTED IN U.S.A.

6-D 5-D DWG. ISS.
6-D 5-D C.D. ISS.

SD-69128-01
ISS. 5-D 6-D

KEY TELEPHONE SYSTEM NO. 1A-KEY AND TELEPHONE CIRCUIT
TCI Library www.telephonectors.info

CIRCUIT NOTES:
 101. PROVIDE THE KEY TELEPHONE SET IN ACCORDANCE WITH REQUIREMENTS AS INDICATED IN THE FOLLOWING TABLE. THE CORD CONDUCTOR COLORS ARE SHOWN UNDER THE DESIGNATIONS OF THE TERMINALS IN THE SET EXCEPT WHERE "D" APPEARS WHICH INDICATES THAT THE CONDUCTOR IS DEAD ENDED IN THE SET.

NUMBER OF LINES AND FEATURES PROVIDED FOR BY KEYS	WITH EXCLUSION KEY	CODE						TO LINE 1	TO LINE 2						TO LINE 3						TO LINE 4						TO LINE 5						BUZZER SIGNALING				EXTENSION OR HEADSET CUT-OFF	TO EXCLUDED STATIONS				TO LINE AND SIGNAL CKT.		SPARE SEE NOTE 311	LINE AND BUSY LAMP CONNECTIONS													
		KEY TEL. SET			TEL. SET CORD			RING	TIP	BAL	HOLD	RING	TIP	DESIGNATIONS OF THE TERMINALS IN THE SET (SEE NOTES 305, 306, 307 & 310)						HOLD	RING	TIP	BAL			HOLD	RING	TIP	BAL			HOLD	R	B	LAMP NOT USED																							
		MANUAL	5A DIAL (SEE NOTE 301)	5B DIAL	RATING OF SET	CODE	USE IN CKT.	IR	IT	IB	IH	2R	2T	E2	E3	E4	D	2B TAPE (SEE NOTE 303)	2H	3R	3T	E1	E4	D	3B TAPE (SEE NOTE 302)	3H	4R	4T	E4	D	4H TAPE (SEE NOTE 302)	5R	5T	E2	D	TAPE (SEE NOTE 302)	5H	G	S	IS	2S	3S	CR	CT	E1	E2	E3	E4	A	A	A	X	LG	IL	2L	3L	4L	5L
								* SEE NOTE 311																											SEE NOTE 311																							
								CORD CONDUCTOR COLORS																																																		
H O P O	NO	440EA	440EB	440EC	STD.	D14A	STD.	R	G	Y	BK	BL	W							BR-R	BR-G	BR-Y	BR-BK	BR-BL			BR-BL	BR-W																														
	YES	441EA	441EB	441EC	STD.	D18A	MFR. DISC.	R	G	Y	BK	BL	W							BR-R	BR-G	BR-Y	BR-BK	BR-BL			BR-BL	BR-W					R-G	R-Y	R-BK	R-BL	R-W	G-Y																				
H O P O P O S O	NO	440FA	440FB	440FC	STD.	D12A	STD.	R	G	Y	BK	BL	W							BR-R	BR-G	BR-Y	BR-BK	BR-BL			BR-BL	BR-W																														
	YES	441FA	441FB	441FC	MFR. DISC.	D16A	MFR. DISC.	R	G	Y	BK	BL	W							BR-R	BR-G	BR-Y	BR-BK	BR-BL			BR-BL	BR-W					BR-BK	BR-Y					R-G	R-Y	R-BK	R-BL	R-W	G-Y														
	YES	445FA	---	445FC	STD.	D20B	STD.	R	G	Y	BK	BL	W							BR-R	BR-G	BR-Y	BR-BK	BR-BL			BR-BL	BR-W					BR-BK	BR-Y					R-G	R-Y	R-BK	R-BL	R-W	G-Y														
H O P O P O S O	NO	440GA	440GB	440GC	STD.	D12A	STD.	R	G	Y	BK	BL	W							BR-R	BR-G	BR-Y	BR-BK	BR-BL			BR-BL	BR-W																														
	YES	441GA	441GB	441GC	MFR. DISC.	D16A	MFR. DISC.	R	G	Y	BK	BL	W							BR-R	BR-G	BR-Y	BR-BK	BR-BL			BR-BL	BR-W					BR-BK	BR-Y					R-G	R-Y	R-BK	R-BL	R-W	G-Y														
	YES	445GA	---	445GC	STD.	D20B	STD.	R	G	Y	BK	BL	W							BR-R	BR-G	BR-Y	BR-BK	BR-BL			BR-BL	BR-W					BR-BK	BR-Y					R-G	R-Y	R-BK	R-BL	R-W	G-Y														
H O P O P O P O P O	NO	460GA	460GB	460GC	STD.	D22A	MFR. DISC.	R	G	Y	BK	BL	W							BR-R	BR-G	BR-Y	BR-BK	BR-BL			BR-BL	BR-W	R-G	R-Y	R-BK	R-BL	R-W	G-Y	G-BK	G-BL					R-G	R-Y	R-BK	R-BL	R-W	G-Y												
	YES	461GA	461GB	461GC	MFR. DISC.	D26A	MFR. DISC.	R	G	Y	BK	BL	W							BR-R	BR-G	BR-Y	BR-BK	BR-BL			BR-BL	BR-W	R-G	R-Y	R-BK	R-BL	R-W	G-Y	G-BK	G-BL					R-G	R-Y	R-BK	R-BL	R-W	G-Y												
	YES	465GA	---	465GC	STD.	D32A	STD.	R	G	Y	BK	BL	W							BR-R	BR-G	BR-Y	BR-BK	BR-BL			BR-BL	BR-W	R-G	R-Y	R-BK	R-BL	R-W	G-Y	G-BK	G-BL					R-G	R-Y	R-BK	R-BL	R-W	G-Y												
H O P O P O P O P O S O	NO	460HA	460HB	460HC	STD.	D20A	MFR. DISC.	R	G	Y	BK	BL	W							BR-R	BR-G	BR-Y	BR-BK	BR-BL			BR-BL	BR-W	R-G	R-Y	R-BK	R-BL	R-W	G-Y	G-BK	G-BL					R-G	R-Y	R-BK	R-BL	R-W	G-Y												
	YES	461HA	461HB	461HC	STD.	D24A	STD.	R	G	Y	BK	BL	W							BR-R	BR-G	BR-Y	BR-BK	BR-BL			BR-BL	BR-W	R-G	R-Y	R-BK	R-BL	R-W	G-Y	G-BK	G-BL					R-G	R-Y	R-BK	R-BL	R-W	G-Y												
	YES	465HA	---	465HC	STD.	D24A	STD.	R	G	Y	BK	BL	W							BR-R	BR-G	BR-Y	BR-BK	BR-BL			BR-BL	BR-W	R-G	R-Y	R-BK	R-BL	R-W	G-Y	G-BK	G-BL					R-G	R-Y	R-BK	R-BL	R-W	G-Y												
H O P O P O P O P O S O	NO	460KA	460KB	460KC	STD.	D20A	MFR. DISC.	R	G	Y	BK	BL	W							BR-R	BR-G	BR-Y	BR-BK	BR-BL			BR-BL	BR-W	R-G	R-Y	R-BK	R-BL	R-W	G-Y	G-BK	G-BL					R-G	R-Y	R-BK	R-BL	R-W	G-Y												
	YES	461KA	461KB	461KC	MFR. DISC.	D24A	MFR. DISC.	R	G	Y	BK	BL	W							BR-R	BR-G	BR-Y	BR-BK	BR-BL			BR-BL	BR-W	R-G	R-Y	R-BK	R-BL	R-W	G-Y	G-BK	G-BL					R-G	R-Y	R-BK	R-BL	R-W	G-Y												
	YES	465KA	---	465KC	STD.	D29A	STD.	R	G	Y	BK	BL	W							BR-R	BR-G	BR-Y	BR-BK	BR-BL			BR-BL	BR-W	R-G	R-Y	R-BK	R-BL	R-W	G-Y	G-BK	G-BL					R-G	R-Y	R-BK	R-BL	R-W	G-Y												
H O P O P O P O S O C D	NO	460LA	460LB	460LC	STD.	D18A	MFR. DISC.	R	G	Y	BK	BL	W							BR-R	BR-G	BR-Y	BR-BK	BR-BL			BR-BL	BR-W									R-Y	R-G	R-BK	R-BL	R-W	G-Y																
	YES	461LA	461LB	461LC	MFR. DISC.	D22A	MFR. DISC.	R	G	Y	BK	BL	W							BR-R	BR-G	BR-Y	BR-BK	BR-BL			BR-BL	BR-W					R-Y	R-G	R-BK	R-BL	R-W	G-Y	G-BK	G-BL					R-Y	R-G	R-BK	R-BL	R-W	G-Y								
	YES	465LA	---	465LC	STD.	D26B	STD.	R	G	Y	BK	BL	W							BR-R	BR-G	BR-Y	BR-BK	BR-BL			BR-BL	BR-W					R-Y	R-G	R-BK	R-BL	R-W	G-Y	G-BK	G-BL					R-Y	R-G	R-BK	R-BL	R-W	G-Y								
H O P O P O P O S O S O	NO	460MA	460MB	460MC	STD.	D18C	MFR. DISC.	R	G	Y	BK	BL	W							BR-R	BR-G	BR-Y	BR-BK	BR-BL			BR-BL	BR-W									R-Y	R-G	R-BK	R-BL	R-W	G-Y																
	YES	461MA	461MB	461MC	MFR. DISC.	D22A	MFR. DISC.	R	G	Y	BK	BL	W							BR-R	BR-G	BR-Y	BR-BK	BR-BL			BR-BL	BR-W					R-Y	R-G	R-BK	R-BL	R-W	G-Y	G-BK	G-BL					R-Y	R-G	R-BK	R-BL	R-W	G-Y								
	YES	465MA	---	465MC	STD.	D26B	STD.	R	G	Y	BK	BL	W							BR-R	BR-G	BR-Y	BR-BK	BR-BL			BR-BL	BR-W					R-Y	R-G	R-BK	R-BL	R-W	G-Y	G-BK	G-BL					R-Y	R-G	R-BK	R-BL	R-W	G-Y								
H O P O P O S O S O S O	NO	460NA	460NB	460NC	STD.	D14A	STD.	R	G	Y	BK	BL	W							BR-R	BR-G	BR-Y	BR-BK	BR-BL			BR-BL	BR-W									R-Y	R-G	R-BK	R-BL	R-W	G-Y																
	YES	461NA	461NB	461NC	MFR. DISC.	D18A	MFR. DISC.	R	G	Y	BK	BL	W							BR-R	BR-G	BR-Y	BR-BK	BR-BL			BR-BL	BR-W					BR-BK	BR-Y	BR-BL	BR-W	R-G	R-Y	R-BK	R-BL	R-W	G-Y																
	YES	465NA	---	465NC	STD.	D22B	STD.	R	G	Y	BK	BL	W							BR-R	BR-G	BR-Y	BR-BK	BR-BL			BR-BL	BR-W					BR-BK	BR-Y	BR-BL	BR-W	R-G	R-Y	R-BK	R-BL	R-W	G-Y																

INFORMATION NOTES:

301. ALL SETS EQUIPPED WITH 5HA DIALS ARE RATED "MFR. DISC"
302. WHEN SPADE TIPS ARE TAPED, THEY ARE DRESSED IN UNDER THE TERMINAL PLATE ON THE KEY.
303. ON ALL 44IEB AND ON 44IEA AND 44IEC SETS NOT EQUIPPED WITH 2B TERMINALS, THE BR-R LEAD IS TAPED AND DRESSED IN UNDER TERMINAL PLATE ON THE KEY.
304. PROVIDE "M" WIRING WHEN THE BUZZER IS TO OPERATE ON 60 CYCLE A-C, AND PROVIDE "N" WIRING WHEN THE BUZZER IS TO OPERATE ON D-C.
305. SETS ARE WIRED IN THE SHOP WITH RED RINGER AND YELLOW CONDENSER LEADS CONNECTED TO "IR" AND "IT" TERMINALS RESPECTIVELY FOR SET RINGER TO BE USED AS A LINE RINGER ON LINE 1. THEY MAY BE CONNECTED BY THE INSTALLER TO OTHER "R" AND "T" TERMINALS. WHEN THE RINGER IS USED FOR A PRIVATE LINE OR AS A COMMON RINGER OR WHEN A BUZZER IS USED CHANGE THE CORD CONDUCTOR SHOWN CONNECTED TO TERMINAL "A" IN THE COLUMN UNDER THE ASTERISK IN THE TABLE OF NOTE IOI TO TERMINAL "K" INSTEAD.
306. SETS ARE WIRED IN THE SHOP WITH THE G-W AND R-W LEADS FROM THE CUT-OFF KEY CONNECTED TO TERMINALS "2T" AND "2R" RESPECTIVELY TO CUT-OFF EXTENSION STATIONS FROM LINE 2. THESE LEADS MAY BE CONNECTED BY THE INSTALLER TO OTHER "R" AND "T" TERMINALS.
307. MAKE RINGER, BUZZER AND CUT-OFF CONNECTION AS FOLLOWS:

COLOR OF WIRES IN SET	RINGER AND CONDENSER CONNECTIONS		CUT-OFF CONNECTIONS		
	R	Y	BK-W	G-W	R-W
SET RINGER USED AS INDIVIDUAL LINE RINGER ON T & R OF ANY LINE, EXCEPT PRIVATE LINES.	R	T	---	---	---
SET RINGER USED FOR A PRIVATE LINE OR AS A COMMON RINGER OR BUZZER USED AS COMMON OR INTERCOMMUNICATING SIG.	A	K	---	---	---
SET RINGER USED AS A LINE RINGER WHEN CUT-OFF KEY IS OPERATED TO SUBSTITUTE SET RINGER FOR EXTERNAL STA. OR RINGER. CONNECT S-R COND LEAD TO R OF LINE. SEE NOTE 302.	X	T	X	R	T
CUT-OFF KEY ON T AND R OF ANY LINE EXCEPT WHEN ON LINE 1 WITH EXCLUSION KEY.	---	---	X	T	R
CUT-OFF AND EXCLUSION KEYS BOTH ASSOCIATED WITH LINE 1.	---	---	X	E2	E1
HEAD RECEIVERS USED AS LISTENING IN SETS.	---	---	X	GN	R
CUT-OFF SET RINGER OR BUZZER WHEN USED AS A PRIVATE LINE, COMMON OR INTERCOMMUNICATING SIGNAL.	CT	K	X	A	CR
CUT-OFF SET RINGER WHEN USED AS A LINE RINGER	CR	CT	X	T	R
RINGER IN SET NOT USED.	A	A	---	---	---

308. CONNECTIONS OF S-R CONDENSER LEAD

	BUZZER OR SET RINGER USED FOR	CONN S-R COND LEAD TO TERM	DISPOSAL OF CORD CONDUCTORS SHOWN IN NOTE IOI ON TERMS		STRAP BETWEEN TERMS. A AND
			A	*A	
SETS MFR UP TO 4-1-41 NO DOT BESIDE DATE	COM RINGER OR BUZZER	L1	A	K	---
	LINE RINGER	A	TAPE	TAPE	R HAVING RED RINGER LEAD
SETS DATED 4-1-41 WITH DOT BESIDE DATE AND DATED LATER WITHOUT DOT	COM RINGER OR BUZZER	L1	A	K	---
	LINE RINGER	R HAVING RED RING LEAD	A	A	---

309. TO EMPLOY THE EXCLUSION KEY AS MEANS TO CUT-OFF A COMMON RINGER OR BUZZER IN A TELEPHONE SET MAKE THE FOLLOWING CONNECTIONS:
R-Y AND G-Y EXCLUSION KEY LEADS TO TERMINAL A. BL EXCLUSION KEY LEAD TO TERMINAL E2. CORD CONDUCTOR LISTED IN TABLE OF NOTE IOI AS CONNECTED TO TERMINAL E2 CHANGE TO TERMINAL E1. RED RINGER OR BUZZER LEAD TO TERMINAL E2. BLACK RINGER OR BUZZER LEAD, YELLOW AND SLATE CONDENSER LEADS TO TERMINAL K.
310. LAMPS ARE NOT PROVIDED IN ALL SETS BUT WHEN PROVIDED ARE NOT USED.
311. AT EXTERNAL CONNECTING BLOCK, SPARE CONDUCTORS SHALL BE CONNECTED TO SPARE TERMINALS OR TAPED.
312. WHERE THE RINGER IN THIS SET IS SUBSTITUTED FOR AN EXTERNAL STATION OR RINGER BY THE OPERATION OF THE CUT OFF KEY, REVERSE THE TIP AND RING LEADS TO THE EXTERNAL STATION OR RINGER.

SD-69128-01 PRINTED IN U.S.A.

6-D 5-D DWG. ISS.

6-D 5-D C.D. ISS.