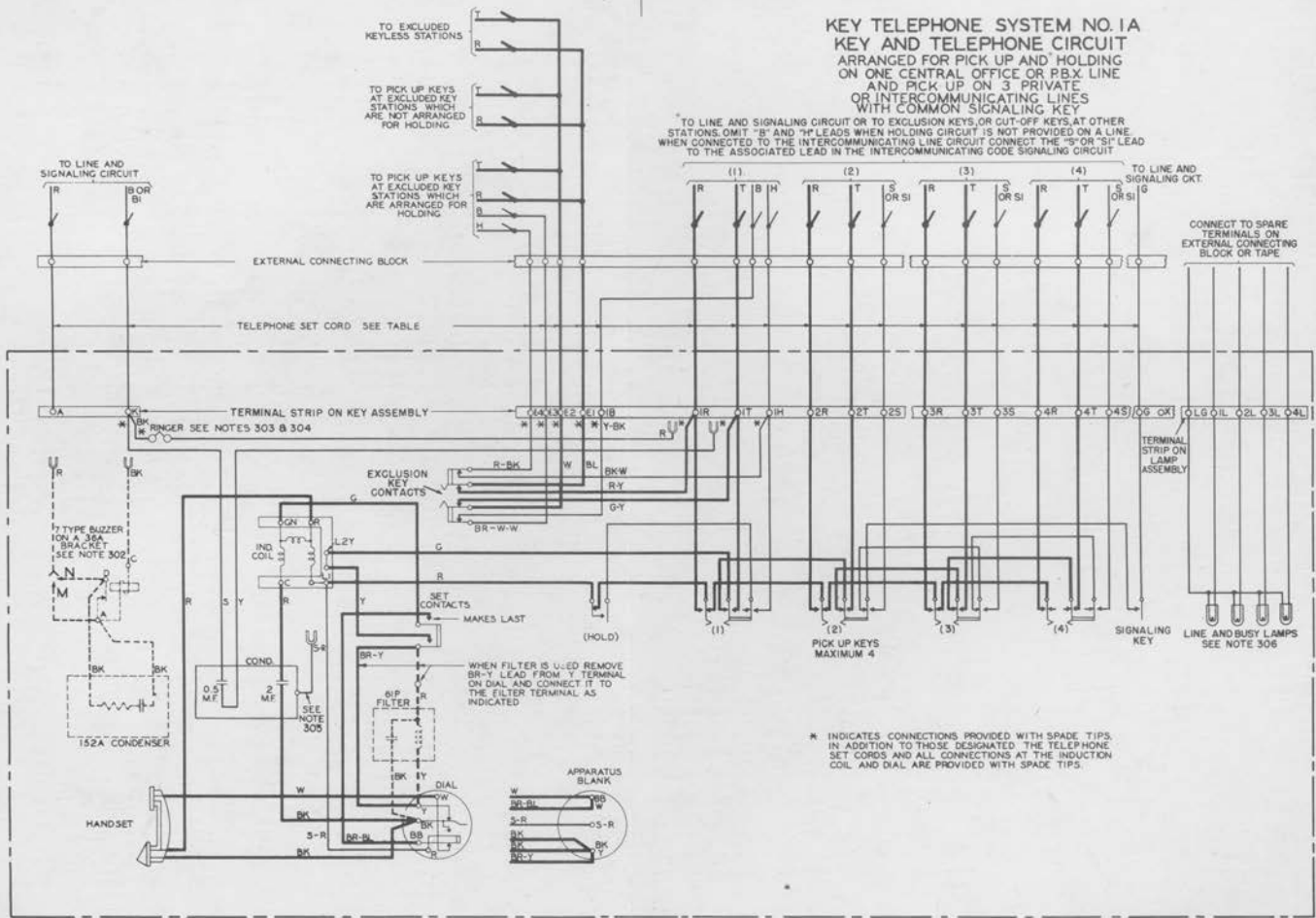


KEY TELEPHONE SYSTEM NO. 1A KEY AND TELEPHONE CIRCUIT

ARRANGED FOR PICK UP AND HOLDING
ON ONE CENTRAL OFFICE OR P.B.K. LINE
AND PICK UP ON 3 PRIVATE
OR INTERCOMMUNICATING LINES
WITH COMMON SIGNALING KEY

* TO LINE AND SIGNALING CIRCUIT OR TO EXCLUSION KEYS OR CUT-OFF KEYS AT OTHER
STATIONS OMIT "B" AND "M" LEADS WHEN HOLDING CIRCUIT IS NOT PROVIDED ON A LINE.
WHEN CONNECTED TO THE INTERCOMMUNICATING LINE CIRCUIT CONNECT THE "S" OR "SI" LEAD
TO THE ASSOCIATED LEAD IN THE INTERCOMMUNICATING CODE SIGNALING CIRCUIT



SD-69096-01 PRINTED IN U.S.A.

7-D 6-D 5-D DWG. ISS.
7-D 6-D 5-D C.D. ISS.

SD-69096-01
ISS. [A-D-G-D]-7-D

KEY TELEPHONE SYSTEM NO. 1A
KEY AND TELEPHONE CIRCUIT
WITH COMMON SIGNALING KEY

CIRCUIT NOTES:

101. PROVIDE THE KEY TELEPHONE SET IN ACCORDANCE WITH REQUIREMENTS AS INDICATED IN THE FOLLOWING TABLE. THE CORD CONDUCTOR COLORS ARE SHOWN UNDER THE DESIGNATIONS OF THE TERMINALS IN THE SET.

NUMBER OF LINES AND FEATURES PROVIDED FOR BY KEYS	WITH EXCLUSION KEY	CODE								TO LINE 1		TO LINE 2		TO LINE 3		TO LINE 4		TO EXCLUDED STATIONS				TO LINE AND SIG CKT		SPARE (SEE NOTE 307)				LINE AND BUSY LAMP CONNECTIONS										
		KEY TEL SET		RATING OF SET	CODE	USE IN CKT	RING	TIP	BAL	HOLD	RING	TIP	SIG	RING	TIP	SIG	RING	TIP	BAL	HOLD	R	B	LG	IL	2L	3L	4L											
		MANUAL (SEE NOTE 301)	5HB DIAL																									TEL SET CORD	IR	IT	IB	IH	2R	2T	2S	3R	3T	3S
	NO	460JA	460JB	460JC	MFR DISC	D20A D20B	MFR DISC MFR DISC	D20A D20B	MFR DISC MFR DISC	D35A STD	CORD COLORS		R	G	Y	BK	BL	W	BRG	BR-Y	BR-BK	BR-W	R-G	R-Y	R-BL	G-Y	G-BK	G-BL	BR-R	BR-BL	BR-BK	BR-W						
													R	G	Y	BK	BL	W	BRG	BR-Y	BR-BK	BR-W	R-G	R-Y	R-BL	G-Y	G-BK	G-BL	R-W	BR-R	BR-BL	BR-BK						
	R	G	Y	BK	BL	W	BRG	BR-Y	BR-BK	BR-W			R-G	R-Y	R-BL	G-W	Y-BL	Y-W	BL-W	BK-BL	S	S-R	BK-W	G-BK	G-BL													
	R	G	Y	BK	BL	W	BRG	BR-Y	BR-BK	BR-W			R-G	R-Y	R-BL	G-Y	G-BK	G-BL	G-W	Y-BK	Y-W	BR-R	BR-BL	BR-BK	R-W	G-Y	G-BK	G-BL										
	R	G	Y	BK	BL	W	BRG	BR-Y	BR-BK	BR-W			R-G	R-Y	R-BL	G-W	G-BK	G-BL	G-W	Y-BK	Y-W	BR-R	BR-BL	BR-BK	R-W	G-Y	G-BK	G-BL										
	R	G	Y	BK	BL	W	BRG	BR-Y	BR-BK	BR-W			R-G	R-Y	R-BL	G-W	G-BK	G-BL	G-W	Y-BK	Y-W	BR-R	BR-BL	BR-BK	R-W	G-Y	G-BK	G-BL										

INFORMATION NOTES:

301. ALL SETS EQUIPPED WITH SHA DIALS ARE RATED "MFR. DISC"
302. PROVIDE "M" WIRING WHEN THE BUZZER IS TO OPERATE ON 60 CYCLE A-C AND PROVIDE "N" WIRING WHEN THE BUZZER IS TO OPERATE ON D-C.
303. SETS ARE WIRED IN THE SHOP WITH RED RINGER AND YELLOW CONDENSER LEADS CONNECTED TO IR AND IT TERMINALS RESPECTIVELY FOR SET RINGER TO BE USED AS A LINE RINGER ON LINE 1. THEY MAY BE CONNECTED BY THE INSTALLER TO OTHER "R" AND "T" TERMINALS, WHEN THE RINGER IS USED FOR A PRIVATE LINE OR AS A COMMON RINGER OR WHEN A BUZZER IS USED CHANGE THE CORD CONDUCTOR SHOWN CONNECTED TO TERMINAL "A" IN THE COLUMN UNDER THE ASTERISK * IN THE TABLE OF NOTE 101 TO TERMINAL "K" INSTEAD.
304. MAKE RINGER AND BUZZER CONNECTIONS AS FOLLOWS:

COLOR OF LEADS IN SET	SET RINGERS	RINGER AND CONDENSER CONNECTIONS	
		R	Y
SET RINGER USED AS INDIVIDUAL LINE RINGER ON T AND R OF ANY LINE EXCEPT PRIVATE LINES	SET RINGERS	R	T
SET RINGER USED FOR A PRIVATE LINE OR AS COMMON RINGER OR BUZZER USED AS COMMON OR INTERCOMMUNICATING SIGNAL	SET RINGERS	A	K

305. CONNECTIONS OF S-R CONDENSER LEAD:

	BUZZER OR SET RINGER USED FOR	CONNECT S-R TO TERM	DISPOSAL OF CORD CONDUCTORS TO TERM	SHOWN IN NOTE 101 ON TERMS	STRAP BETWEEN TERMS A AND
SETS MFC. UP TO 4/1/41 NO DOT BE SIDE DATE	COMMON RINGER OR BUZZER	L1	A	K	—
	LINE RINGER	A	TAPE	TAPE	R HAVING RED RINGER LEAD
SETS DATED 4/1/41 WITH DOT BE SIDE DATE AND DATED LATER WITHOUT DOT	COMMON RINGER OR BUZZER	IR	A	K	—
	LINE RINGER	R HAVING RED RINGER LEAD	A	A	—

306. LAMPS, IF PROVIDED, ARE NOT USED.
307. AT EXTERNAL CONNECTING BLOCK, SPARE CONDUCTORS SHALL BE CONNECTED TO SPARE TERMINALS OR TAPED, AT SET END SPARE CONDUCTORS SHALL BE TAPED AND DRESSED IN SET.

SD-69096-01

PRINTED IN U.S.A.

7-D DWG. ISS.

7-D C. D. ISS.