

DWG ISSUE	CD	DATE ISSUED	DRWN	APPD
1	I	5-22-57	JH	MVA
2D	2D	12-17-57	JH	MVA
3A	3A	5-7-58	G.N.	MVA
4D	3A	7-18-58	R.S.	MVA
5D	4D	9-18-58	J.F.	MVA
6D	4D	12-28-58	G.W.	MVA
7D	5D	9-14-59	R.H.	MVA
8D	5D	6-16-60	J.H.	MVA
9D	6D	10-25-60	J.H.	MVA
10D	6D	3-22-62	L.C.	MVA
11D	6D	12-26-62	J.H.	MVA
12D	6D	7-31-63	BAT	MVA

CIRCUIT NOTES:

101.	DESIG	AMP	POTENTIAL FUSED	ONE PER
	1-1/3		48V TALK	3 CKTS

102.	FEATURE OR OPTION	PROVIDE	
		FIG.	APP OR WIR
	TRUNK CKT	1	ONE PER CKT
	SWITCHBOARD JACK CKT	2	ONE PER APP
	WHEN USED WITH TONE, RING AND INT CKT OF 740E		T
	WHEN USED WITH 608A PBX		Z

103. NETWORK VALUES			
NO.	NETWORK		CAPACITANCE IN UF
	CODE	RESISTANCE IN OHMS	

104. RECORDS OF FIGURES, WIRING, AND APPARATUS CHANGES						
CHANGED ON ISS	IF JOB RECORDS DO NOT SPECIFY	THIS OPTION WAS FURN	SEE NOTE	USE IN CIRCUIT		
				STD	ASM	MD
5D	T	X,Y OR Z	102	T,X,Y,Z		
10D	S OR R	S	102	R		S

FIG. 1 TRUNK CKT

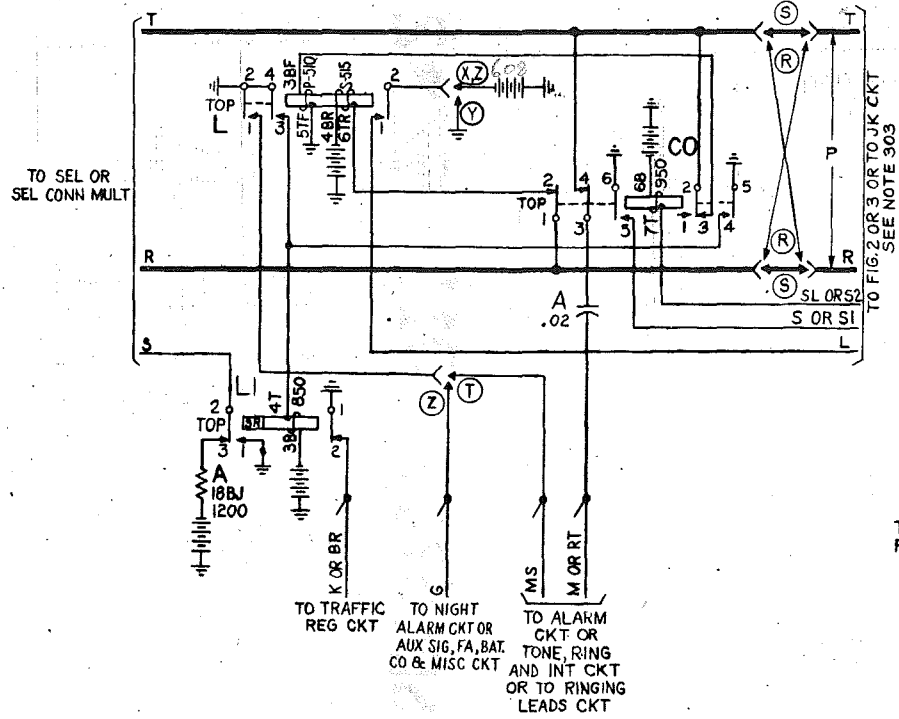
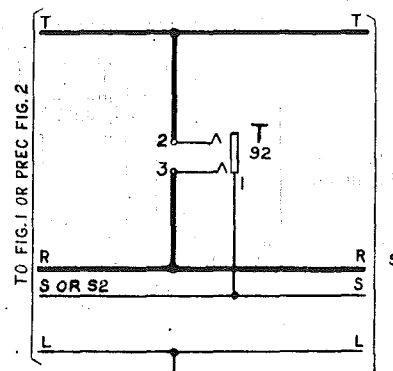


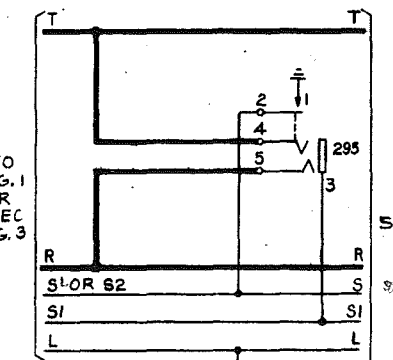
FIG. 2 SWITCHBOARD JACK CKT



TO SUCCEEDING FIG. 2

THIS DESIGNATION FOR 701A OR 701B PBX ONLY

FIG. 3 SWITCHBOARD JACK CKT



TO SUCCEEDING FIG. 3

THIS DESIGNATION FOR 701A OR 701B PBX ONLY

THRU NIGHT ALARM, AUX SIG OR BUZZER CKT

INFORMATION NOTES:

- 301. UNLESS OTHERWISE SPECIFIED: RESISTANCE VALUES ARE IN OHMS CAPACITANCE VALUES ARE IN MICROFARADS.
- 302. THIS CIRCUIT SHALL BE PROVIDED FROM SELECTOR OR SELECTOR CONNECTOR LEVELS ONLY WHERE THE TRUNK CIRCUITS DO NOT TERMINATE IN STATION LINE CIRCUITS.
- 303. JACKS AND LAMPS SHALL BE PROVIDED PER THIS DRAWING WHEN THIS TRUNK IS TO BE USED IN EXISTING SWITCHBOARDS ARRANGED WITH TRUNK LAMPS LOCATED BELOW THE JACKS. JACKS AND LAMPS SHALL BE PROVIDED PER THE JACK CIRCUIT DRAWING WHEN THIS TRUNK IS TO BE USED IN NEW SWITCHBOARDS OR IN EXISTING SWITCHBOARDS WHERE THIS JACK CIRCUIT IS ALREADY USED. IN THIS CASE THE LAMPS ARE LOCATED ABOVE THE JACKS.

FIGURES AND OPTIONS ON THIS DWG	
CKT FIG.	APP OR WIRING
1	Z
2	Y
3	X
	T
	S
	R

44-82V

WORKING LIMITS
MAX EXT CKT LOOP 1000
MIN INS RES 20,000

REPLACES SD-36035-01 & SD-66621-01

CL II

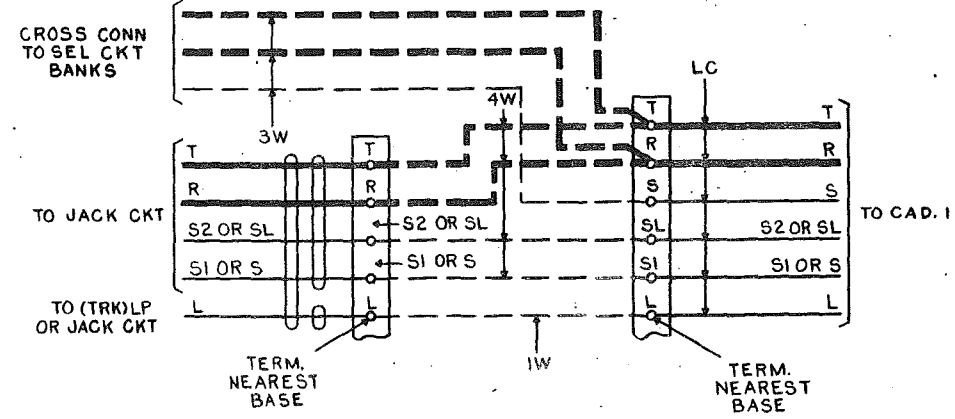
AT&T CO STANDARD

PBX SYSTEMS
NO. 701A, 701B, 701PK, OR 740E
ATTENDANT TRUNK CIRCUIT
FROM SELECTOR OR SELECTOR CONNECTOR LEVELS

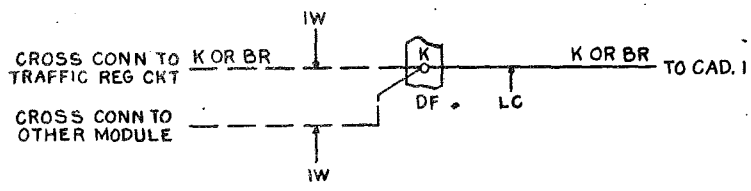
SD-66717-011
3 SHEETS

BELL TELEPHONE LABORATORIES INCORPORATED

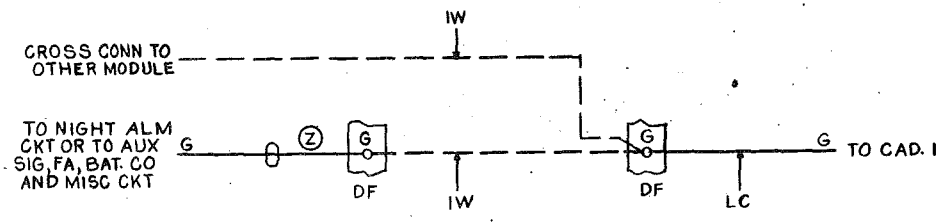
CAD 7
 (FOR FIG. 3)
 LEADS FOR 701PK AND SWITCHBOARDS EQUIPPED
 WITH 295 TYPE JACKS OR JACK CKT FOR 608A
 PBX TO DISTRIBUTING FRAME FOR CONNECTION
 TO SEL AND JACK AND EP CKT



CAD. 8
 (FOR FIG. 1)
 701PK PBX
 TRAFFIC REG LEAD



CAD. 9
 (FOR FIG. 1)
 701PK PBX



CAD. 10
 (FOR FIG. 1)
 701PK

