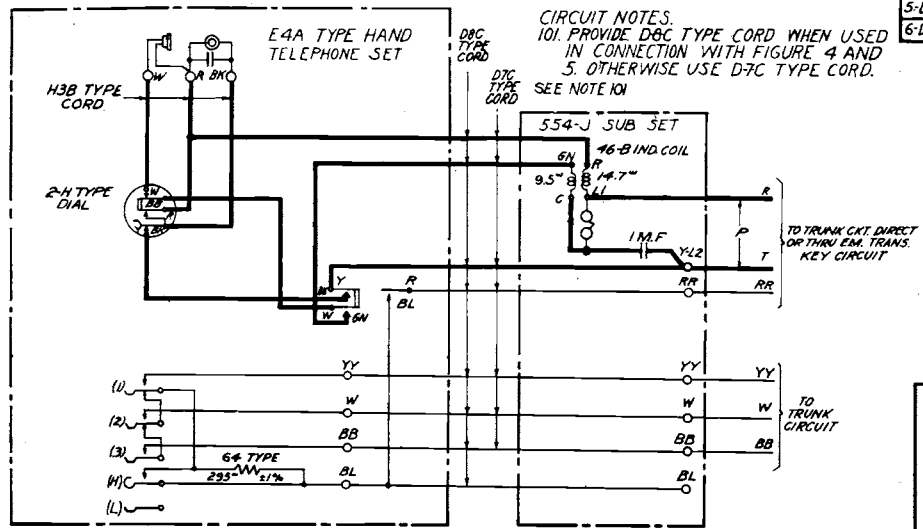


# 750-A P.B.X. STATION CIRCUIT

## FIG. 1

KEY STATION WITH HANDSET



CKT. ISSUE	C. D.	RSUE
4-D	3-D	
5-D	4-D	
6-D	5-D	

PRINTED IN U.S.A.

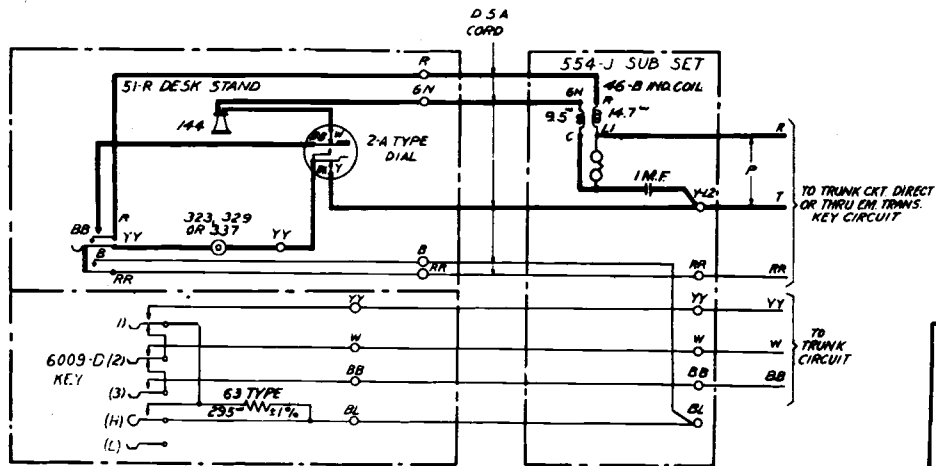
SD-66160-01

# 750-A P.B. X. STATION CIRCUIT

## FIG. 2

KEY STATION WITH DESK STAND

CKT. ISSUE	C.D. ISSUE
4-D	3-D
5-D	4-D
6-D	5-D

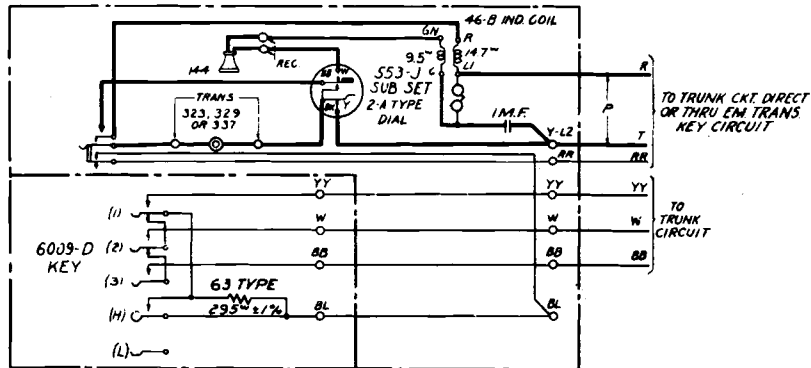


SD-66160-01

# 750-A P.B.X. STATION CIRCUIT

## FIG. 3

KEY STATION WITH WALL SET



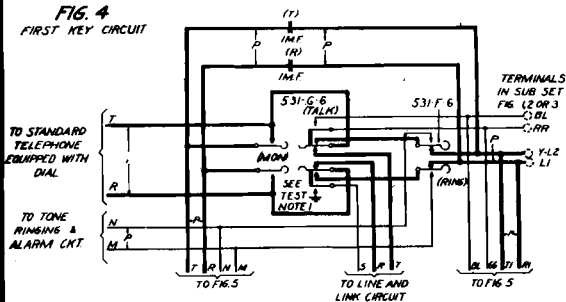
CKT.	ISSUE
4-D	3-D
5-D	1-D
6-D	5-D

SD-66160-01

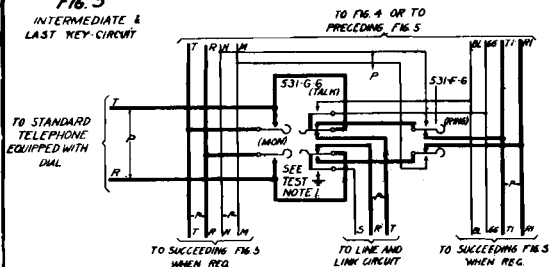
# 750-A P.B.X. STATION CIRCUIT

## CONTROL CABINET CIRCUIT

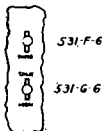
**FIG. 4**  
FIRST KEY CIRCUIT



**FIG. 5**  
INTERMEDIATE & LAST KEY CIRCUIT

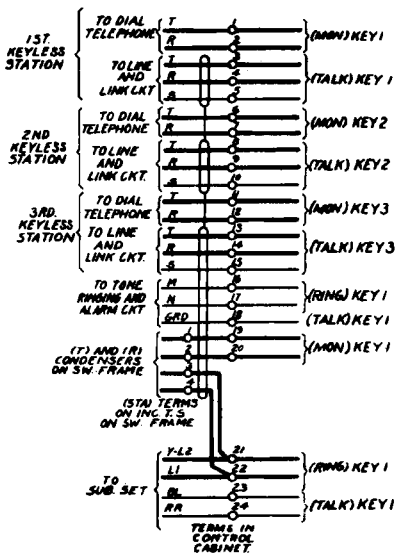


**TEST NOTES:**  
1. ADJUST 531-G-6 KEY SO THAT WHEN THE LEVER IS RESTORED UNRESTRAINED FROM THE OPERATED TO THE NORMAL POSITION, NO NORMALLY CLOSED CONTACTS OF THE OPPOSITE SIDE SHALL BREAK AND NO NORMALLY OPEN CONTACTS OF THE OPPOSITE SIDE SHALL MAKE.



69	75	80	C. D. ISSUE
53	48	62	

**FIG 4K & 5K**

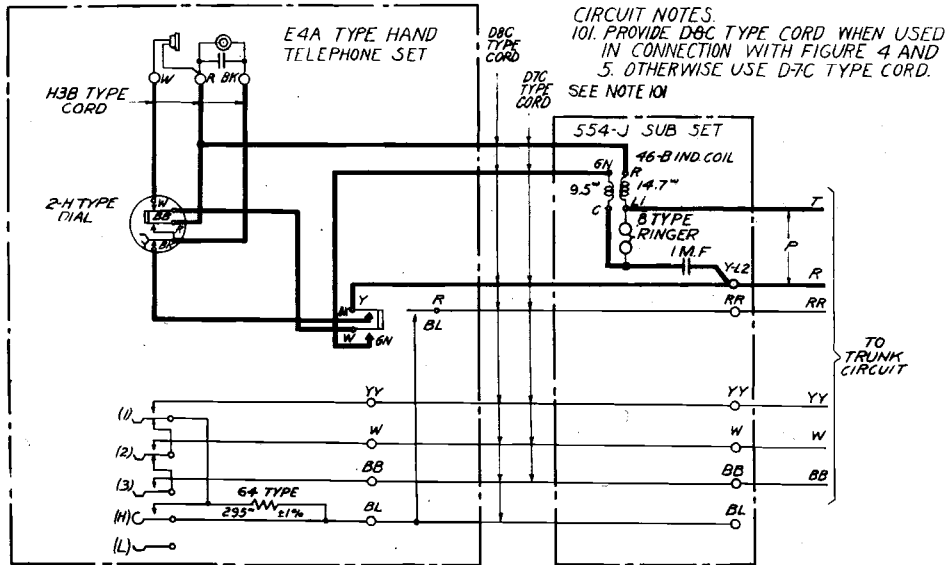


# 750-A P. B. X. STATION CIRCUIT

## FIG. 1

KEY STATION WITH HANDSET

CKT. ISSUE	C. D. ISSUE
3-D	2-D
4-D	3-D



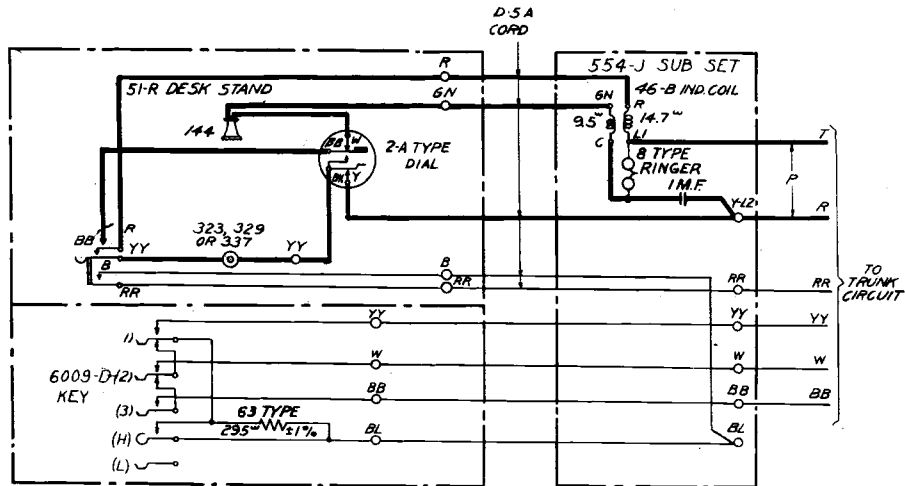
SD-66160-01

# 750-A P.B. X. STATION CIRCUIT

## FIG. 2

KEY STATION WITH DESK STAND

CKT. ISSUE	C.D. ISSUE
3-D	2-D
4-D	3-D



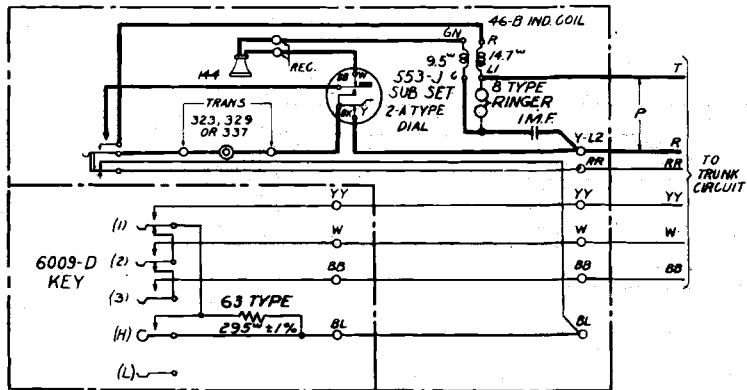
SD-66160-01

# 750-A P.B.X. STATION CIRCUIT

## FIG. 3

KEY STATION WITH WALL SET

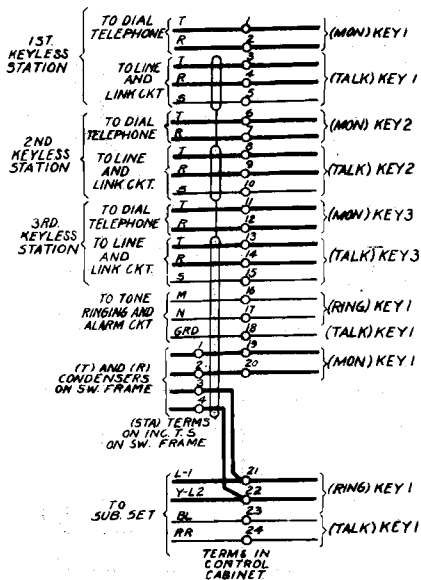
CKT.	ISSUE
3-D	2-D
4-D	3-D



SD-66160-01



### FIG. 4K & 5K



SD-66160-01

4-0	3-0	CKT. ISSUE
3-0	2-0	C. D. ISSUE