

0 1 2 3 4 5 6 7 8 9

DWG ISS	CD ISS	DATE ISSD	DRN	APP
1	1 APPX	10-2-98		

SHEET INDEX		SHEET	
CONTENTS		NO	ISSUE
SHEET INDEX SHEET INDEX NOTES SUPPORTING INFORMATION OPTION INDEX		A1	1
DESIGNATION MNEMONICS		A2	1
AS1 SYSTEM INTER-CABINET CONNECTIONS		B1	1
AS2 POWER DISTRIBUTION		B2	1
AS3 INTRA/INTER EQUIPMENT CABINET FUSE ALARMS		B3	1
AS4 ARU & AMC ALARM CABLING		B4	1
AS5 CONSOLE, LMT AND RS232 CABLING		B5	1
AS6 ETHERNET CABLING		B6	1
AS7 V.35 TO DSU AND MODEM INTERFACE		B7	1
AS8 ABRI & VT1 INTERFACE		B8	1
NOTES		D1	1
		D2	1
CAD1, CAD2 & CAD3		G1	1
CAD4 & CAD5		G2	1
CAD6, CAD7, CAD8, CAD9, CAD10 & CAD11		G3	1
CAD12 & CAD13		G4	1
CAD14, CAD15 & CAD16		G5	1
CAD17 & CAD18		G6	1

OPTION INDEX			
APP OR WRG	RATED ON ISSUE	REF NOTES	LOCATION
Z	1	102	B2
Y	1	102	B2
X	1	102	B2
W	1	102	B2
V	1	102	B2
U	1	102	B5
T	1	102	B8
S	1	102	B8

A
B
C
D
E
F
G
H

A
B
C
D
E
F
G
H

SUPPORTING INFORMATION	
CATEGORY	NO.
ADVANTAGE COMPACT SERVICE NODE CABINET	ED1S022-10
ADVANTAGE MISCELLANEOUS CABINET	ED1S019-10
ADVANTAGE NETWORK TERMINATION CABINET	ED1S020-60

SHEET INDEX NOTES

- ONLY THE LATEST ISSUE, OR ISSUES IF CONCURRENT, ARE SHOWN IN THE INDEX.
- FOR REISSUES, A CHANGED OR NEW SHEET IS ASSIGNED THE SAME ISSUE NUMBER AS SHEET 1.
- THE ISSUE NUMBER OF SHEET 1 IS RECOGNIZED AS THE ISSUE NUMBER OF THE WHOLE DRAWING.

LUCENT TECHNOLOGIES - PROPRIETARY
THIS DOCUMENT CONTAINS PROPRIETARY INFORMATION OF
LUCENT TECHNOLOGIES AND IS NOT TO BE DISCLOSED OR USED EXCEPT
IN ACCORDANCE WITH APPLICABLE CONTRACTS OR AGREEMENTS
All Rights Reserved Unpublished & not for Publication COPYRIGHT 1998 Lucent Technologies

BT13

ADVANCED NETWORK SERVICES

**ADVANTAGE COMPACT SERVICE
NODE**

DWG SIZE C2	ISSUE 1
-----------------------	-------------------

Lucent Technologies **SD-1S011-01** SHEET **A1**
OF 18

0 1 2 3 4 5 6 7 8 9

0 1 2 3 4 5 6 7 8 9

A A

DESIGNATION MNEMONICS

MNEMONIC	DESIGNATION
AC	ALTERNATING CURRENT
ALM	ALARM
AMC	ADVANTAGE MISCELLANEOUS CABINET
AS	APPLICATION SCHEMATIC
ASN	ASYNCHRONOUS RS232
ARU	ALARM RELAY UNIT
BRD	BOARD
BRI	BASIC RATE INTERFACE
CAD	CABLING DIAGRAM
CC	COMCODE
CNSL	CONSOLE
COM	COMMUNICATION PORT
CSNC	COMPACT SERVICE NODE CABINET
CSNU	COMPACT SERVICE NODE UNIT
DC	DIRECT CURRENT
DF	DISTRIBUTING FRAME
DSX	DIGITAL CROSS CONNECT
DSU	DIGITAL SERVICE UNIT
ED	EQUIPMENT DRAWING
ENET	ETHERNET
F	FUSE
G	GAUGE
GPDU	GLOBAL POWER DISTRIBUTION UNIT
INV	INVERTER
JK	JACK
LED	LIGHT EMITTING DIODE
LMT	LOCAL MAINTENANCE TERMINAL
MC	MISCELLANEOUS CABINET
MFFU	MODULAR FUSE FILTER UNIT
MJ	MAJOR
MN	MINOR
MST	MASTER
NIM	NETWORK INTERFACE MODULE
NTC	NETWORK TERMINATING CABINET
NTU	NETWORK TERMINATING UNIT
P	PORT
PCI	PERIPHERAL CONTROL INTERFACE
PCU	PARADYNE CARRIER UNIT
PREC	PRECEDING
R	RING
RCV	RECEIVE
RTN	RETURN
PWR	POWER
SC	SCAN
SD	SIGNAL DISTRIBUTOR
SER	SERIAL
SS7	SIGNALLING SYSTEM 7
SPLT	SPLITTER
SUCC	SUCCEEDING
TB	TERMINAL BLOCK
T	TIP
T1	DS0
VT1	VOICE-DS0
XMT	TRANSMIT
1KVA	1 KILO VOLT AMPERE

B B

C C

D D

E E

F F

G G

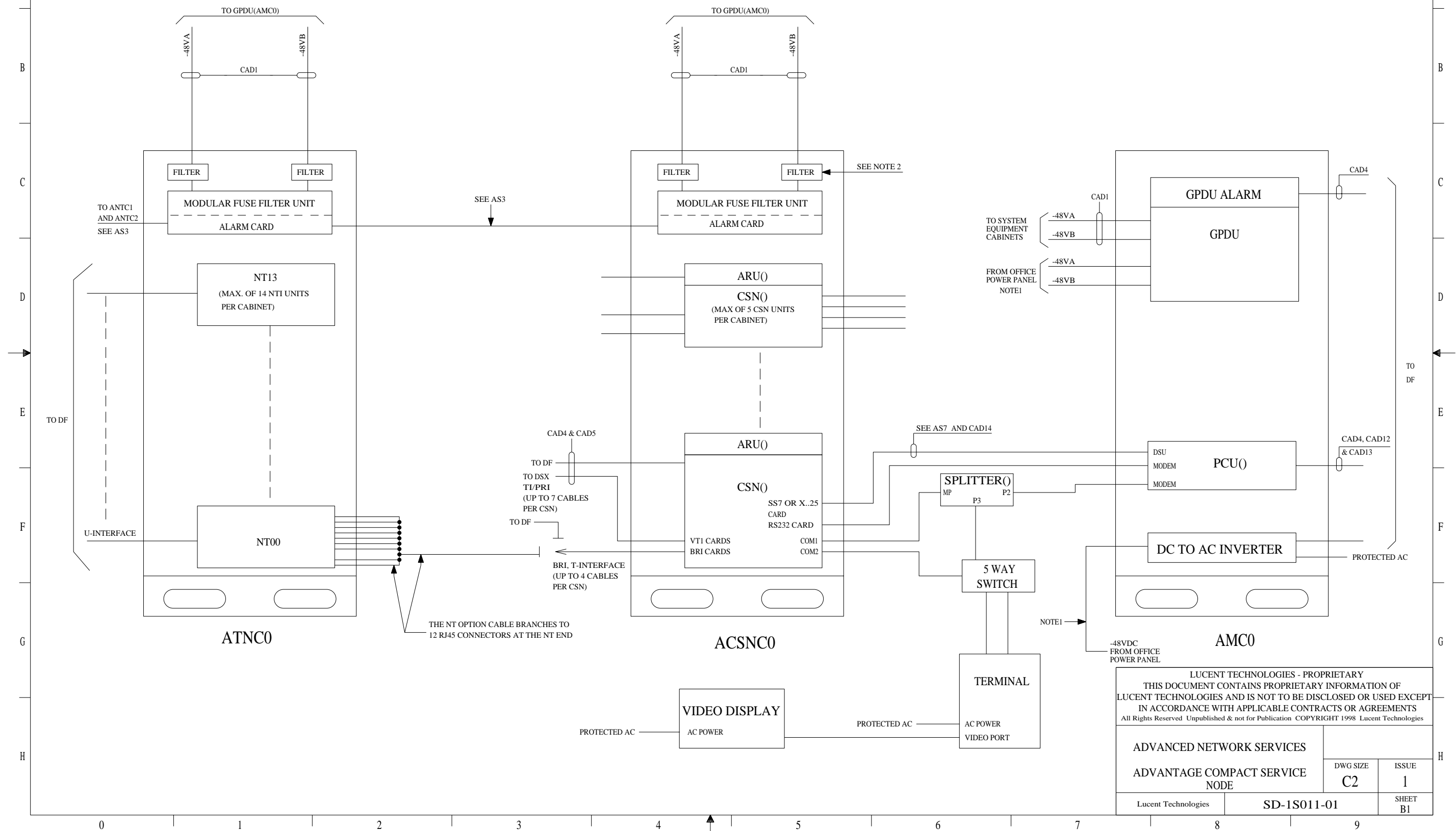
H H

0 1 2 3 4 5 6 7 8 9

LUCENT TECHNOLOGIES - PROPRIETARY THIS DOCUMENT CONTAINS PROPRIETARY INFORMATION OF LUCENT TECHNOLOGIES AND IS NOT TO BE DISCLOSED OR USED EXCEPT IN ACCORDANCE WITH APPLICABLE CONTRACTS OR AGREEMENTS All Rights Reserved Unpublished & not for Publication COPYRIGHT 1998 Lucent Technologies		
ADVANCED SERVICE NODE		
ADVANTAGE COMPACT SERVICE NODE		DWG SIZE C2
		ISSUE 1
Lucent Technologies	SD-1S011-01	SHEET A2

AS1 OVERVIEW OF SYSTEM INTER-CABINET CONNECTIONS

- NOTES:
 1. SEE ED1S017-10 FOR POWER AND GROUND REQUIREMENTS
 2. IN-LINE POWER FILTER

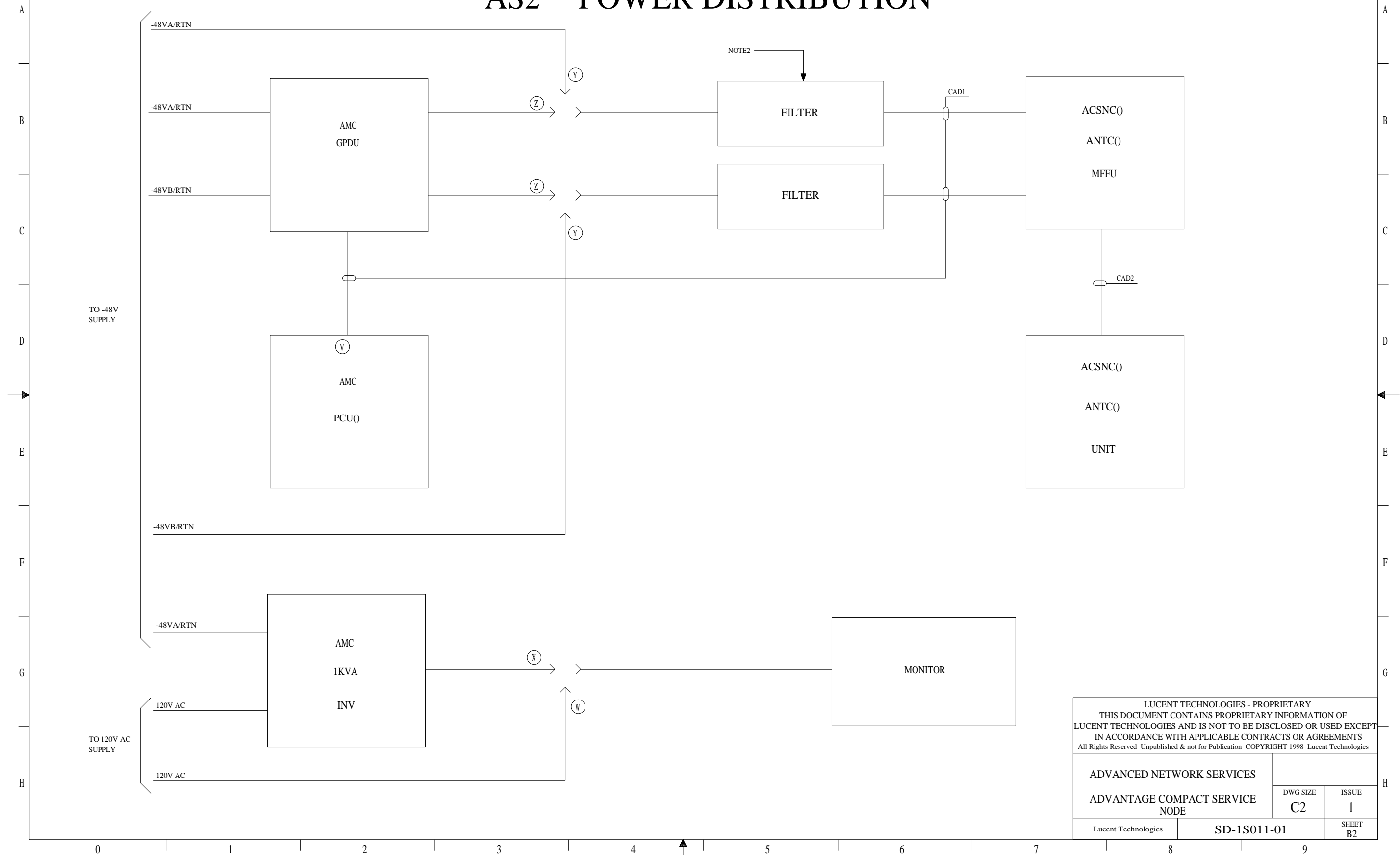


LUCENT TECHNOLOGIES - PROPRIETARY
 THIS DOCUMENT CONTAINS PROPRIETARY INFORMATION OF LUCENT TECHNOLOGIES AND IS NOT TO BE DISCLOSED OR USED EXCEPT IN ACCORDANCE WITH APPLICABLE CONTRACTS OR AGREEMENTS
 All Rights Reserved Unpublished & not for Publication COPYRIGHT 1998 Lucent Technologies

ADVANCED NETWORK SERVICES		DWG SIZE	ISSUE
ADVANTAGE COMPACT SERVICE NODE		C2	1
Lucent Technologies	SD-1S011-01	SHEET B1	

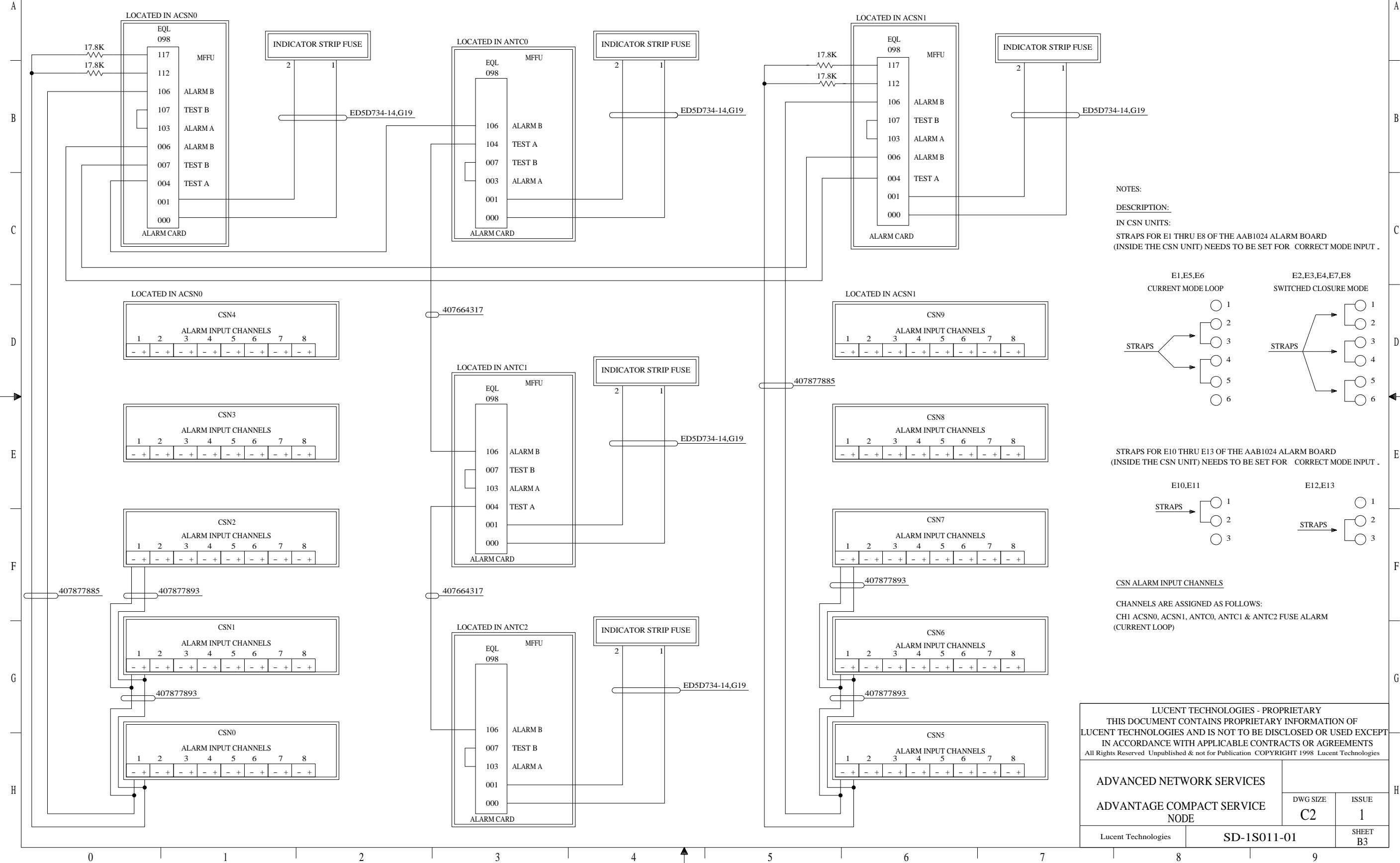
AS2 POWER DISTRIBUTION

1. SEE ED1S017-10 FOR POWER & GROUND REQUIREMENTS.
2. IN-LINE -48V FILTER

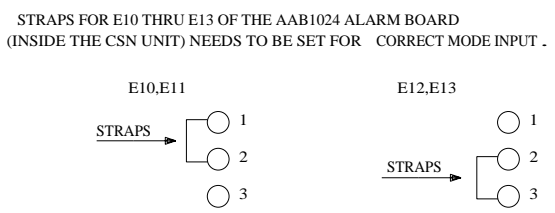
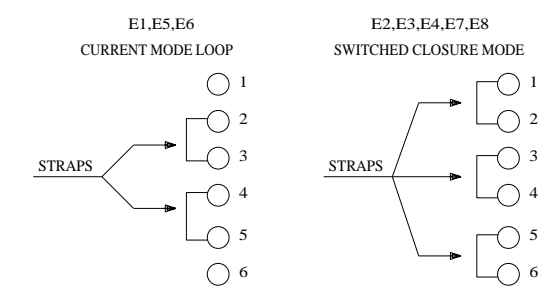


LUCENT TECHNOLOGIES - PROPRIETARY THIS DOCUMENT CONTAINS PROPRIETARY INFORMATION OF LUCENT TECHNOLOGIES AND IS NOT TO BE DISCLOSED OR USED EXCEPT IN ACCORDANCE WITH APPLICABLE CONTRACTS OR AGREEMENTS All Rights Reserved Unpublished & not for Publication COPYRIGHT 1998 Lucent Technologies		
ADVANCED NETWORK SERVICES		
ADVANTAGE COMPACT SERVICE NODE		DWG SIZE C2
		ISSUE 1
Lucent Technologies	SD-1S011-01	SHEET B2

AS3 ACSN INTRA/INTER CABINET FUSE ALARMING



NOTES:
DESCRIPTION:
 IN CSN UNITS:
 STRAPS FOR E1 THRU E8 OF THE AAB1024 ALARM BOARD
 (INSIDE THE CSN UNIT) NEEDS TO BE SET FOR CORRECT MODE INPUT .



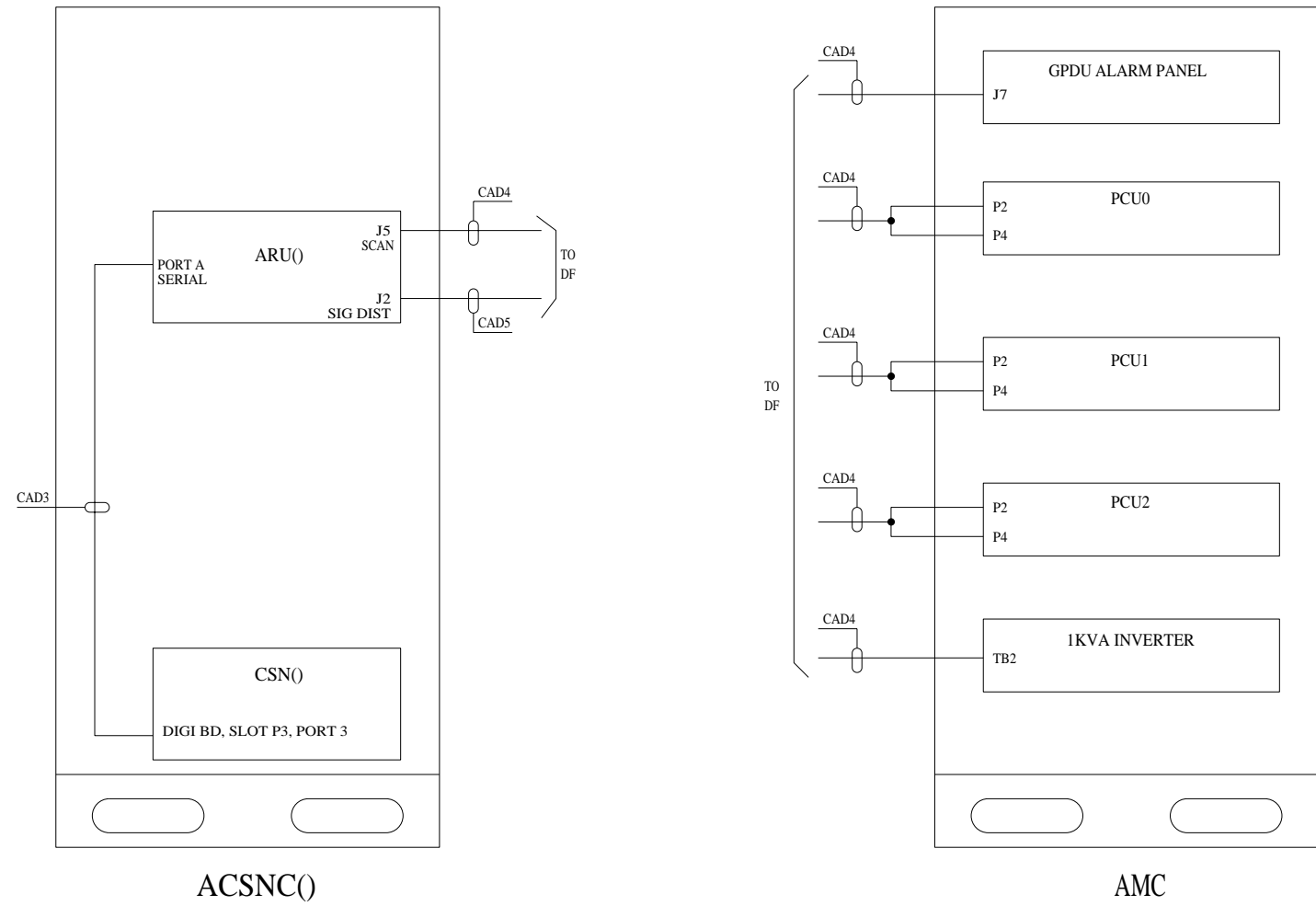
CSN ALARM INPUT CHANNELS
 CHANNELS ARE ASSIGNED AS FOLLOWS:
 CH1 ACSN0, ACSN1, ANTC0, ANTC1 & ANTC2 FUSE ALARM
 (CURRENT LOOP)

LUCENT TECHNOLOGIES - PROPRIETARY THIS DOCUMENT CONTAINS PROPRIETARY INFORMATION OF LUCENT TECHNOLOGIES AND IS NOT TO BE DISCLOSED OR USED EXCEPT IN ACCORDANCE WITH APPLICABLE CONTRACTS OR AGREEMENTS All Rights Reserved Unpublished & not for Publication COPYRIGHT 1998 Lucent Technologies		
ADVANCED NETWORK SERVICES ADVANTAGE COMPACT SERVICE NODE	DWG SIZE C2	ISSUE 1
Lucent Technologies	SD-1S011-01	SHEET B3

AS4 ARU & AMC INTERFACE CABLING

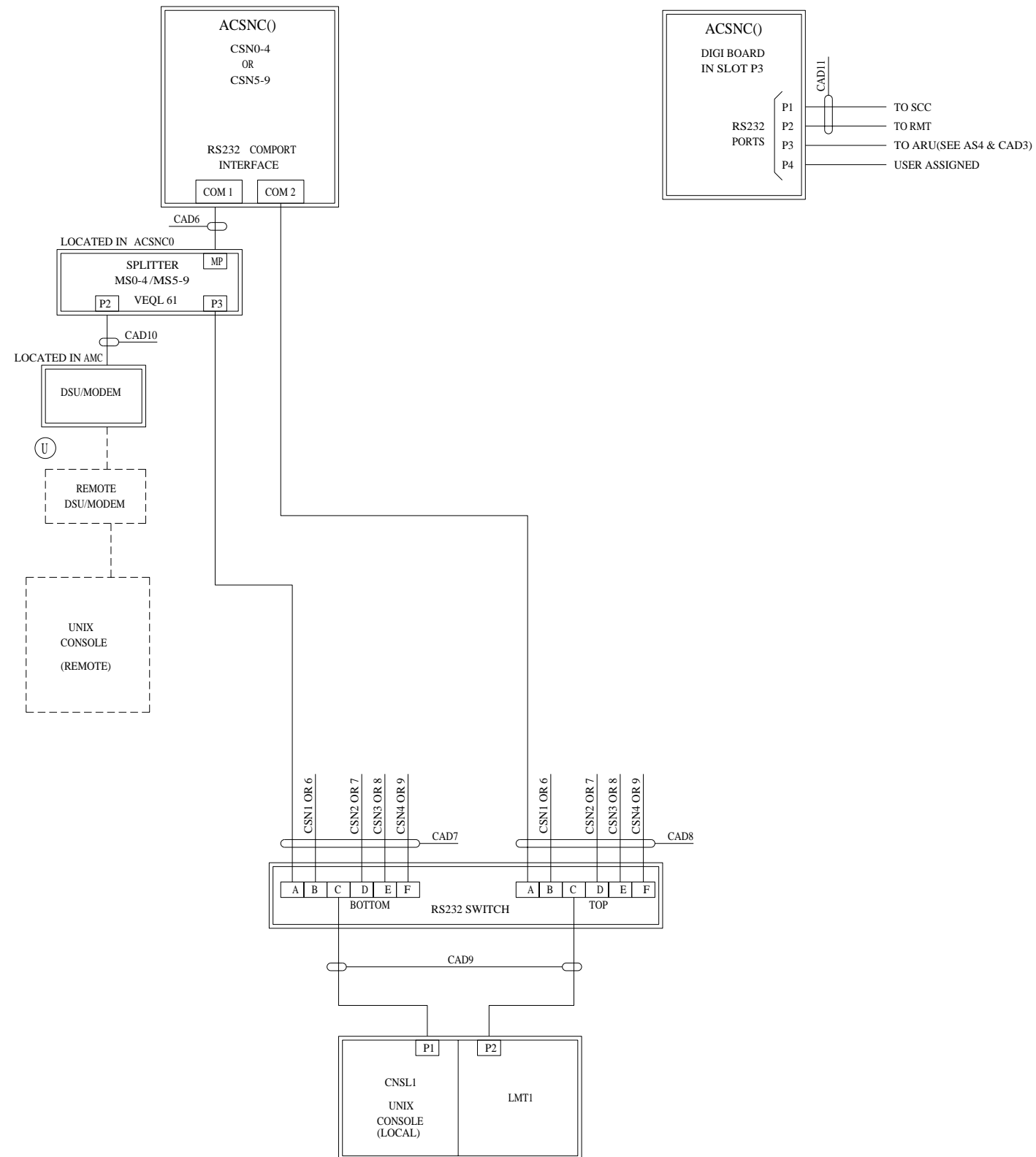
NOTES:

1. SCAN POINTS FROM ALL ARU'S SHOULD BE MULTED TOGETHER AT THE DISTRIBUTING FRAME.
2. SIGNAL DISTRIBUTOR SHOULD BE CONNECTED TO OFFICE ALARM SYSTEM AS ASSIGNED BY CUSTOMER



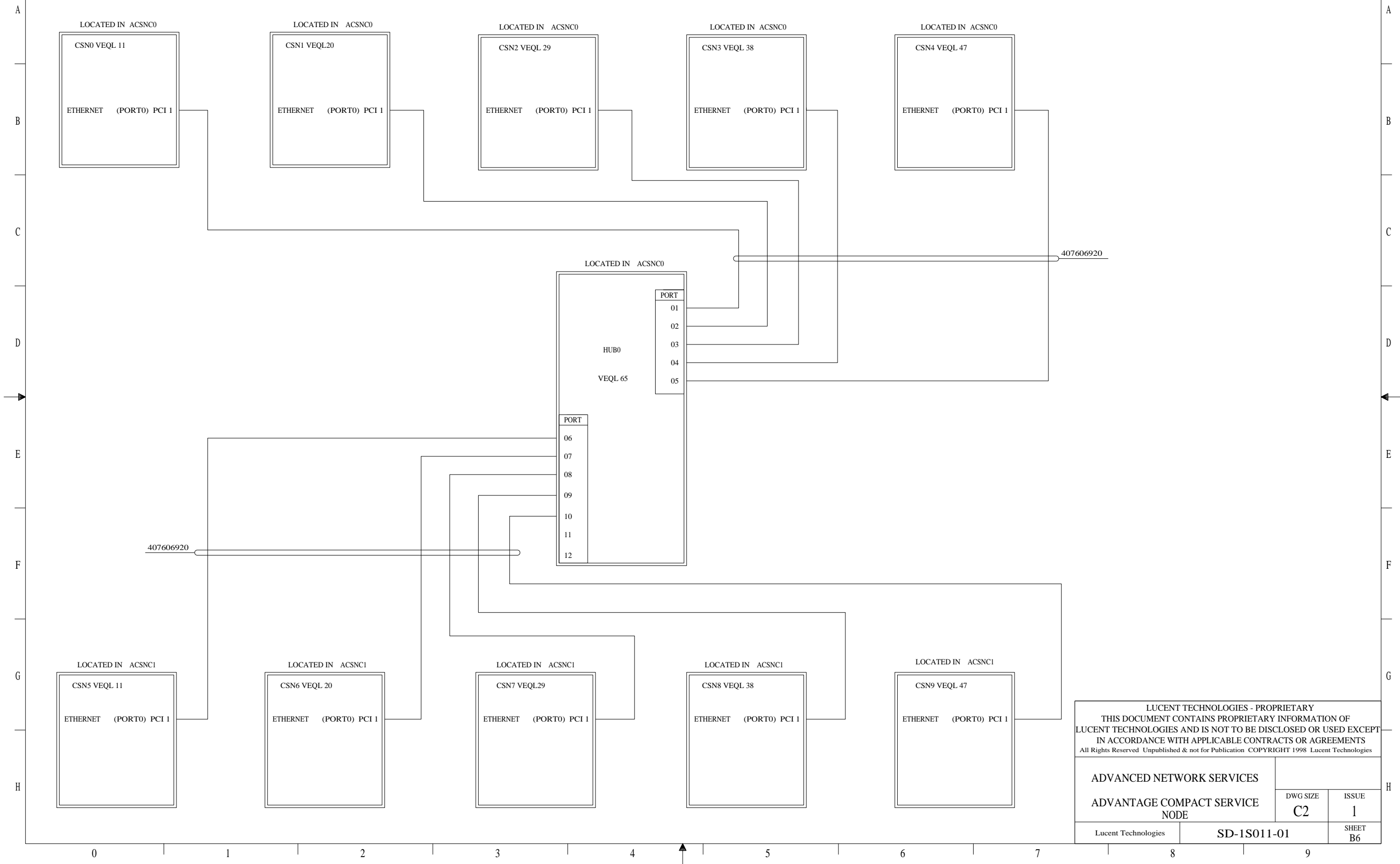
LUCENT TECHNOLOGIES - PROPRIETARY THIS DOCUMENT CONTAINS PROPRIETARY INFORMATION OF LUCENT TECHNOLOGIES AND IS NOT TO BE DISCLOSED OR USED EXCEPT IN ACCORDANCE WITH APPLICABLE CONTRACTS OR AGREEMENTS All Rights Reserved Unpublished & not for Publication COPYRIGHT 1998 Lucent Technologies		
ADVANCED SERVICE NETWORK ADVANTAGE COMPACT SERVICE NODE	DWG SIZE C2	ISSUE 1
Lucent Technologies	SD-1S011-01	SHEET B4

AS5 CONSOLE, LMT AND RS232 CABLING



LUCENT TECHNOLOGIES - PROPRIETARY THIS DOCUMENT CONTAINS PROPRIETARY INFORMATION OF LUCENT TECHNOLOGIES AND IS NOT TO BE DISCLOSED OR USED EXCEPT IN ACCORDANCE WITH APPLICABLE CONTRACTS OR AGREEMENTS All Rights Reserved Unpublished & not for Publication COPYRIGHT 1998 Lucent Technologies		
ADVANCED SERVICE NETWORK		
ADVANTAGE COMPACT SERVICE NODE		DWG SIZE C2
		ISSUE 1
Lucent Technologies	SD-1S011-01	SHEET B5

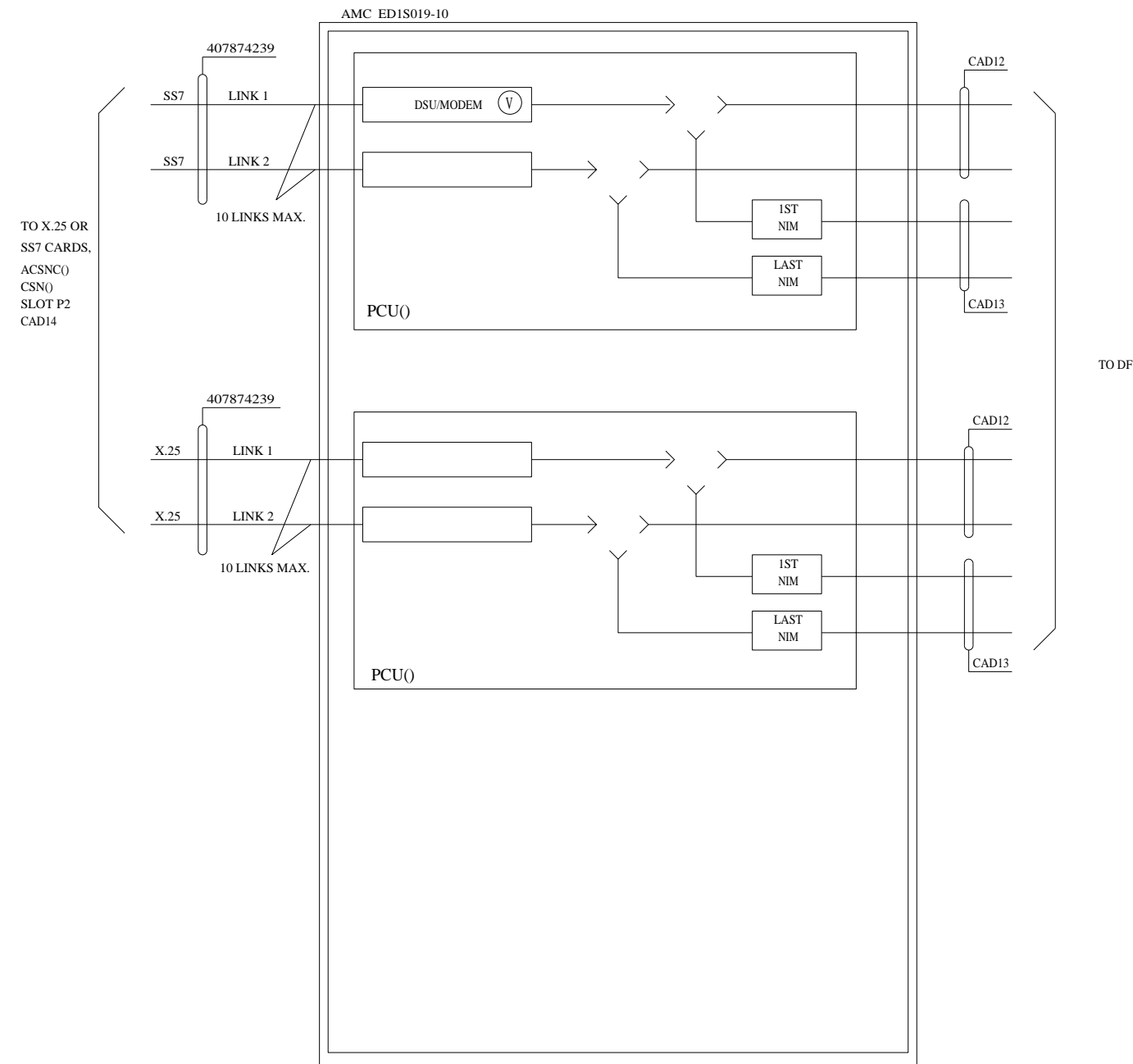
AS6 ETHERNET CABLING



LUCENT TECHNOLOGIES - PROPRIETARY THIS DOCUMENT CONTAINS PROPRIETARY INFORMATION OF LUCENT TECHNOLOGIES AND IS NOT TO BE DISCLOSED OR USED EXCEPT IN ACCORDANCE WITH APPLICABLE CONTRACTS OR AGREEMENTS All Rights Reserved Unpublished & not for Publication COPYRIGHT 1998 Lucent Technologies		
ADVANCED NETWORK SERVICES ADVANTAGE COMPACT SERVICE NODE	DWG SIZE C2	ISSUE 1
Lucent Technologies	SD-1S011-01	SHEET B6

AS7 V.35 DSU INTERFACE

- NOTE:
1. LINK ASSIGNMENTS ARE SPECIFIED BY CUSTOMER
 2. DSU/MODEM TO PCU SLOTS ARE ASSIGNED BY CUSTOMER



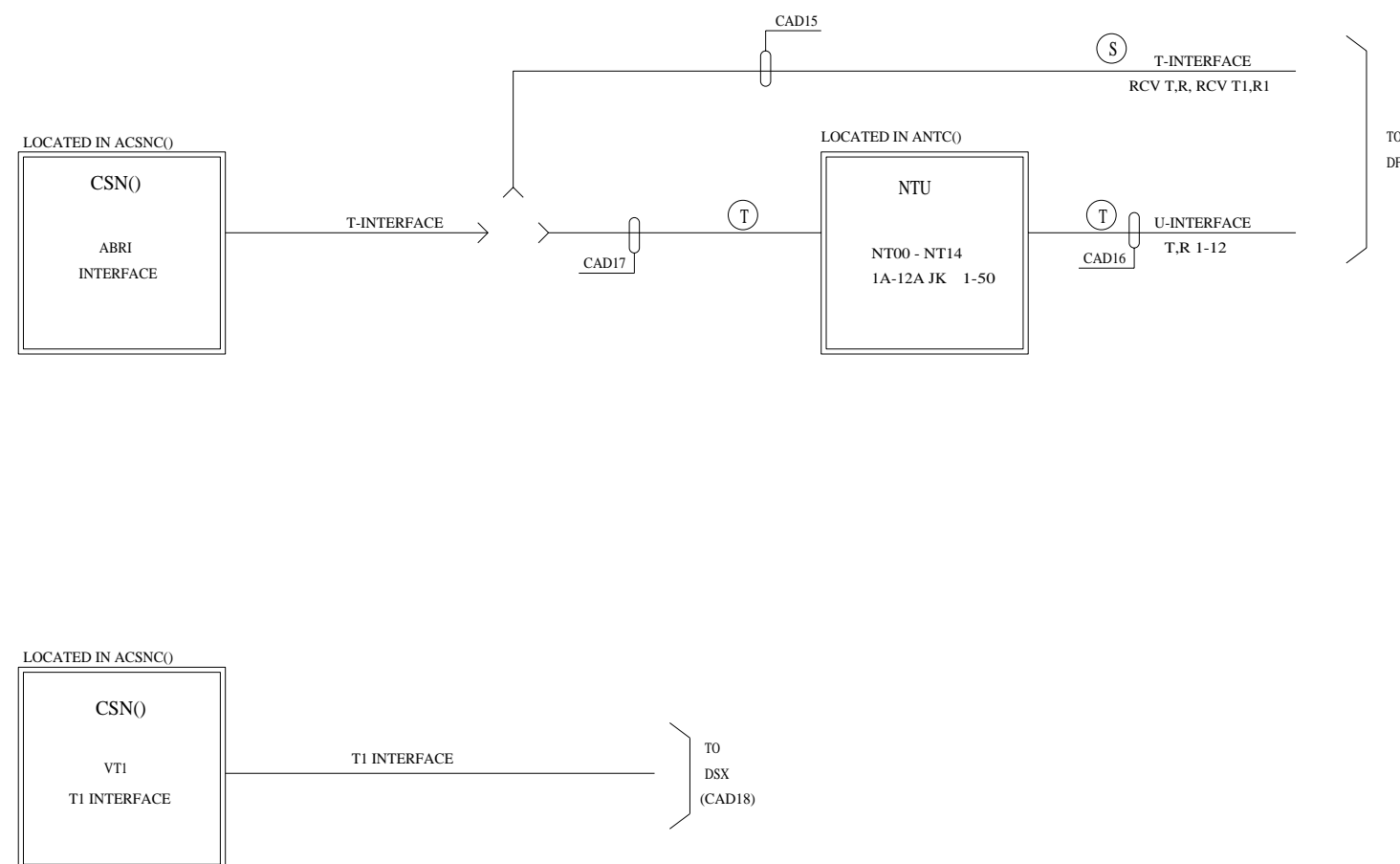
TO X.25 OR
SS7 CARDS,
ACSNC()
CSN()
SLOT P2
CAD14

TO DF

LUCENT TECHNOLOGIES - PROPRIETARY
THIS DOCUMENT CONTAINS PROPRIETARY INFORMATION OF
LUCENT TECHNOLOGIES AND IS NOT TO BE DISCLOSED OR USED EXCEPT
IN ACCORDANCE WITH APPLICABLE CONTRACTS OR AGREEMENTS
All Rights Reserved Unpublished & not for Publication COPYRIGHT 1998 Lucent Technologies

ADVANCED NETWORK SERVICES			
ADVANTAGE COMPACT SERVICE NODE		DWG SIZE C2	ISSUE 1
Lucent Technologies	SD-1S011-01	SHEET B7	

AS8 ABRI T OR U INTERFACE & VT1 T1 INTERFACE



LUCENT TECHNOLOGIES - PROPRIETARY THIS DOCUMENT CONTAINS PROPRIETARY INFORMATION OF LUCENT TECHNOLOGIES AND IS NOT TO BE DISCLOSED OR USED EXCEPT IN ACCORDANCE WITH APPLICABLE CONTRACTS OR AGREEMENTS All Rights Reserved Unpublished & not for Publication COPYRIGHT 1998 Lucent Technologies		
ADVANCED NETWORK SERVICES ADVANTAGE COMPACT SERVICE NODE	DWG SIZE C2	ISSUE 1
Lucent Technologies	SD-1S011-01	
		SHEET B8

CIRCUIT NOTES

101.	DESIG	FUSE AMP	POTENTIAL	ONE PER
	WP91768,L108	3	-48VDC	HUB0(LOCATED IN ACSNC0)
	WP91768,L107	2	-48VDC	ARU(LOCATED IN ACSNC0/1)
	WP91768,L108	3	-48VDC	NT(LOCATED IN ANTC0/1/2)
	WP92458,L13	15	-48VDC	CSN(LOCATED IN ACSNC0/1)
BATTERY LEADS SHALL BE PAIRED WITH SIMILARY DESIGNATED GROUND LEADS UP TO THE FUSE PANEL				
BATTERY SYMBOL		VOLTAGE RANGE		
-48VDC		-42.75V TO -52.5V		

102.

FEATURE OR OPTION	APP OR WRG	QUANTITY
-48V GPDU	YES	Z
	NO	Y
1KVA INVERTER	YES	X
	NO	W
PCU	V	1 (MAX 3)
BRI	T TYPE	S
	U TYPE	T
RS232 CONSL REMOTE	U	AS REQD.

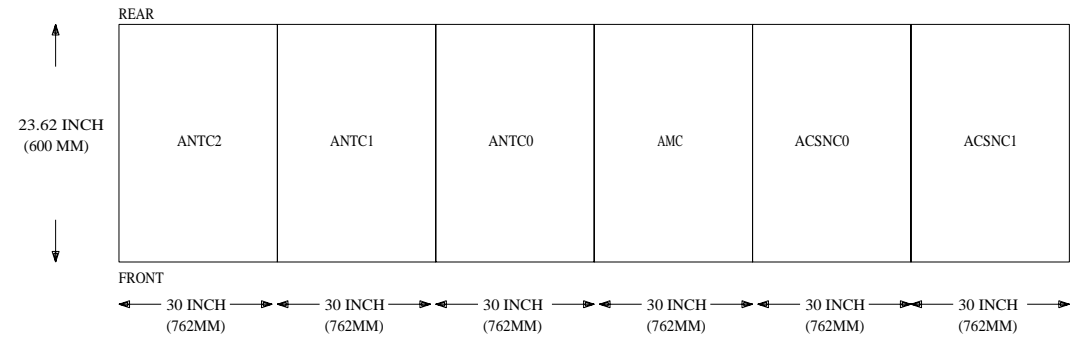
EQUIPMENT NOTES

201.
ALL INTER CABINET CABLING IS COVERED IN:
ED-1S019-10 - AMC
ED-1S022-10 - ACSNC
ED-1S020-60 - ANTC

INFORMATION NOTES

301.
UNLESS OTHERWISE SPECIFIED:
RESISTANCE VALUES ARE IN OHMS.
CAPACITANCE VALUES ARE IN MICROFARADS.
VALUES PRECEDED BY THE SYMBOL +(PLUS)
OR -(MINUS) ARE IN VOLTS

302.
ANS FLOOR PLAN DATA. (TOP VIEW)



- 1) ADDITIONAL FLOOR SPACE MUST BE PROVIDED FOR PERIPHERAL EQUIPMENT (E.G. TERMINALS, ETC.)
- 2) ALL CABINETS ARE 72 INCHES HIGH
- 3) ALL CABINETS SHOULD ALLOW 3 FEET(914MM) CLEARANCE IN THE FRONT OF THE CABINET AND 2 FEET(610MM) IN THE BACK OF THE CABINET

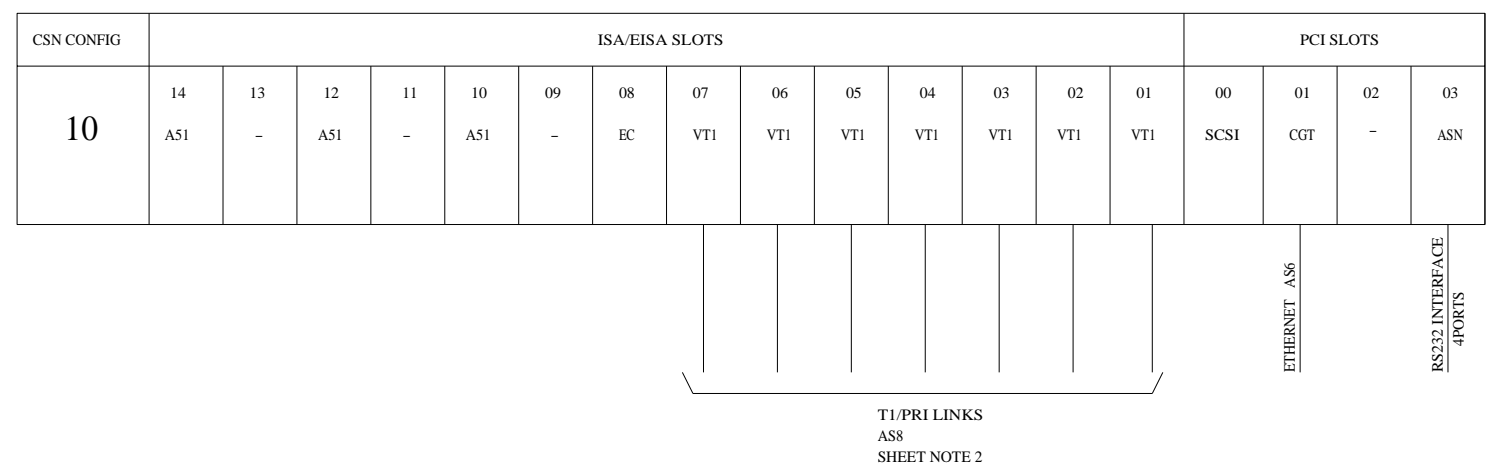
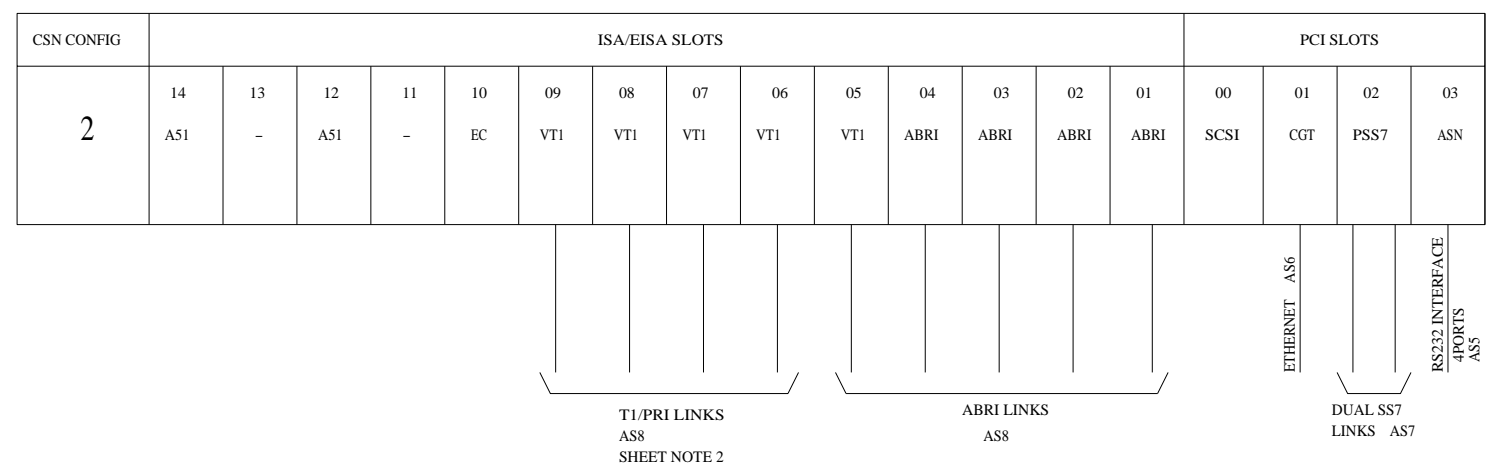
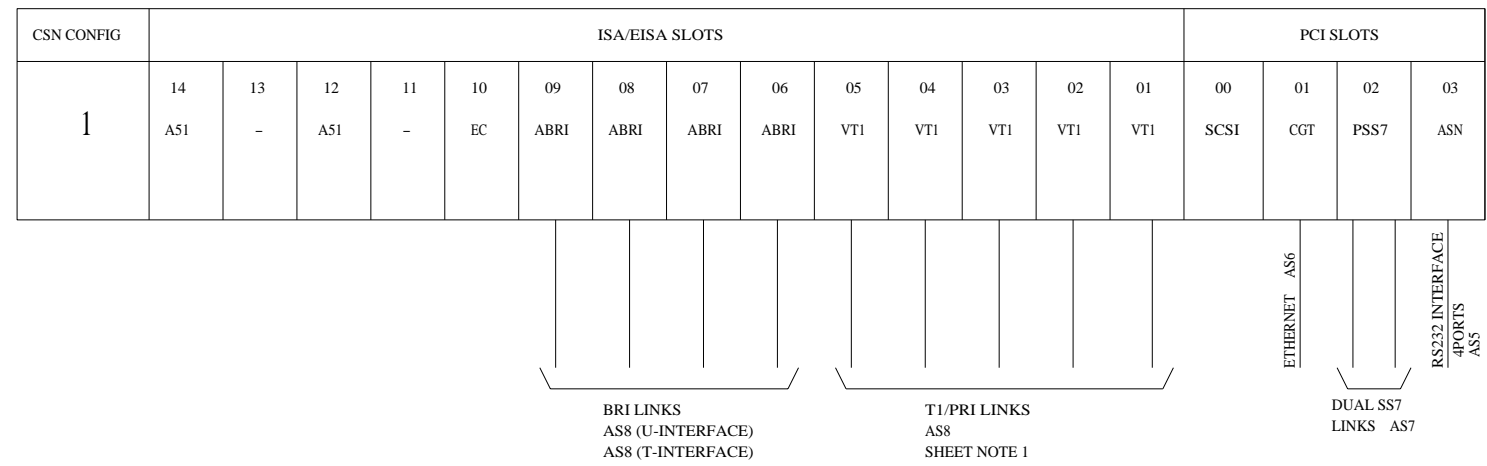
LUCENT TECHNOLOGIES - PROPRIETARY THIS DOCUMENT CONTAINS PROPRIETARY INFORMATION OF LUCENT TECHNOLOGIES AND IS NOT TO BE DISCLOSED OR USED EXCEPT IN ACCORDANCE WITH APPLICABLE CONTRACTS OR AGREEMENTS All Rights Reserved Unpublished & not for Publication COPYRIGHT 1998 Lucent Technologies		
ADVANCED NETWORK SERVICES		
ADVANTAGE COMPACT SERVICE NODE	DWG SIZE C2	ISSUE 1
Lucent Technologies	SD-1S011-01	SHEET D1

0 1 2 3 4 5 6 7 8 9

A
B
C
D
E
F
G
H

EQUIPMENT NOTE:

202.



SHEET NOTES:

1. T1 CLOCK SOURCE IS THE VT1 CARD IN SLOT E05
2. T1 CLOCK SOURCE IS THE VT1 CARD IN SLOT E07

LUCENT TECHNOLOGIES - PROPRIETARY THIS DOCUMENT CONTAINS PROPRIETARY INFORMATION OF LUCENT TECHNOLOGIES AND IS NOT TO BE DISCLOSED OR USED EXCEPT IN ACCORDANCE WITH APPLICABLE CONTRACTS OR AGREEMENTS <small>All Rights Reserved Unpublished & not for Publication COPYRIGHT 1998 Lucent Technologies</small>		
ADVANCED NETWORK SERVICES ADVANTAGE COMPACT SERVICE NODE	DWG SIZE C2	ISSUE 1
Lucent Technologies	SD-1S011-01	SHEET D2

0 1 2 3 4 5 6 7 8 9

CAD 1

EQUIPMENT CABINET POWER FEEDS. ALL FUSES ARE 25AMP.

GPDU FUSE	EQL OR PORT	CABINET/ DEVICE	GPDU FUSE	MFU FEED EQL	CABINET
F1-1	017	ACSNO MFU	F7-1	108	ACSNO MFU
F1-2	032		F7-2	123	
F1-3	063		F7-3	154	
F1-4	078		F7-4	169	
F2-5	017	ACSNC1 MFU	F8-5	108	ACSNC1 MFU
F2-6	032		F8-6	123	
F2-7	063		F8-7	154	
F2-8	078		F8-8	169	
F3-9	017	ANTC0 MFU	F9-9	108	ANTC0 MFU
F3-10	032		F9-10	123	
F3-11	063		F9-11	154	
F3-12	078		F9-12	169	
F4-13	017	ANTC1 MFU	F10-13	108	ANTC1 MFU
F4-14	032		F10-14	123	
F4-15	063		F10-15	154	
F4-16	078		F10-16	169	
F5-17	017	ANTC2 MFU	F11-17	108	ANTC2 MFU
F5-18	032		F11-18	123	
F5-19	063		F11-19	154	
F5-20	078		F11-20	169	
F6-21	RESERVED		F12-21	RESERVED	
F6-22	PCU2-INA	AMC0 PCU'S	F12-22	PCU2-INB	AMC0 PCU'S
F6-23	PCU1-INA		F12-23	PCU1-INB	
F6-24	PCU0-INA		F12-24	PCU0-INB	

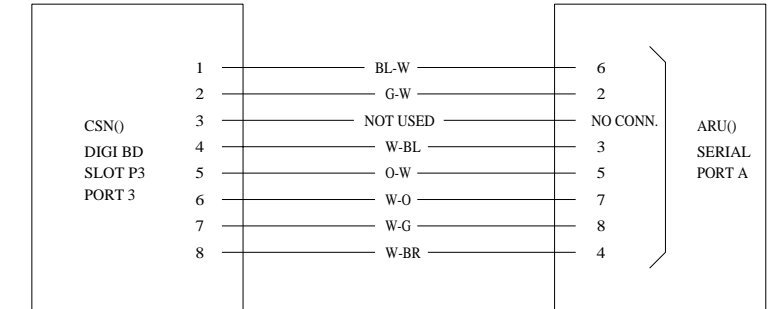
CAD2

MFU FUSE BLOCK AND FUSE ASSIGNMENTS

CABINET	FUSE BLOCK EQL AND FUSE	FUSE SIZE AMPS	DEVICE
ACSNC0	014A	15	CSN0
	023A	15	CSN2
	032A	15	CSN4
	041A	2	ARU1
	041B	2	ARU3
	118A	15	CSN1
	127A	15	CSN3
	141A	3	HUB0
	141B	2	ARU0
	150A	2	ARU2
150B	2	ARU4	
ACSNC1	014A	15	CSN0
	023A	15	CSN2
	032A	15	CSN4
	041A	2	ARU1
	041B	2	ARU3
	118A	15	CSN1
	127A	15	CSN3
	141B	2	ARU0
	150A	2	ARU2
	150B	2	ARU4
ANTC()	014A	3	NT0
	014B		NT1
	023A		NT2
	023B		NT3
	032A		NT8
	032B		NT9
	041A		NT10
	041B		NT11
	118A		NT4
	118B		NT5
	127A		NT6
	127B		NT7
	141B		NT12
150A	NT13		

ALL ANTC CABINETS ARE WIRED WITH THE SAME ASSIGNMENTS

CAD3

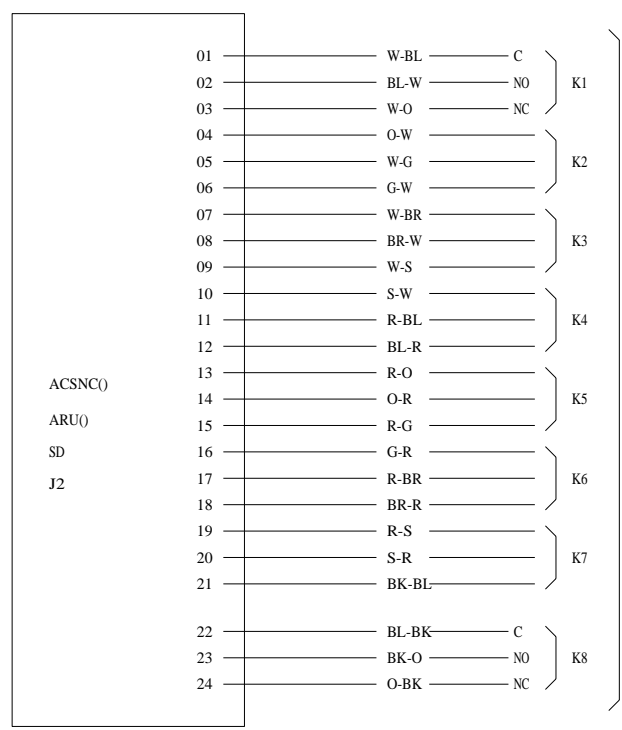
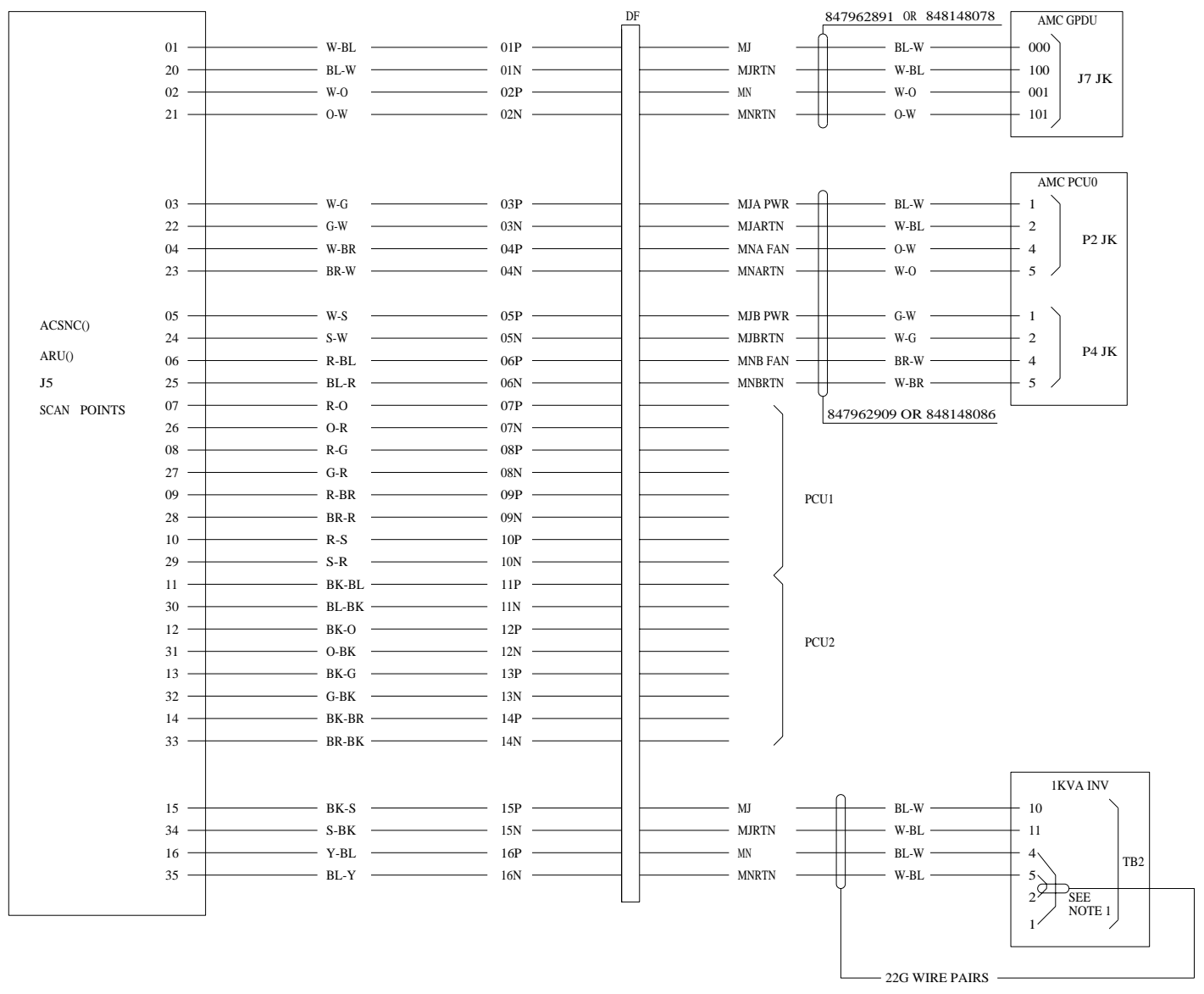


FOR ARU TO DIGI PORT3 CABLE
COMCODE 108203522

LUCENT TECHNOLOGIES - PROPRIETARY THIS DOCUMENT CONTAINS PROPRIETARY INFORMATION OF LUCENT TECHNOLOGIES AND IS NOT TO BE DISCLOSED OR USED EXCEPT IN ACCORDANCE WITH APPLICABLE CONTRACTS OR AGREEMENTS All Rights Reserved Unpublished & not for Publication COPYRIGHT 1998 Lucent Technologies		
ADVANCED SERVICE NETWORK		
ADVANTAGE COMPACT SERVICE NODE	DWG SIZE C2	ISSUE 1
Lucent Technologies	SD-IS011-01	SHEET G1

CAD4

CAD5



NOTE:
FOR SIGNAL DISTRIBUTOR
CABLE ORDER COMCODE
847962875 OR 848148045

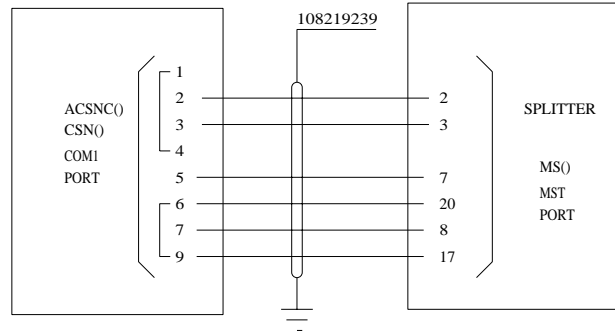
NOTE:
1. FOR INVERTER ALARMS:
JUMPER TB2-1 TO TB2-4, AND TB2-2 TO TB2-5
ONLY WHEN UTILITY AC POWER IS CONNECTED TO AC INPUT
OF THE INVERTER.

LUCENT TECHNOLOGIES - PROPRIETARY THIS DOCUMENT CONTAINS PROPRIETARY INFORMATION OF LUCENT TECHNOLOGIES AND IS NOT TO BE DISCLOSED OR USED EXCEPT IN ACCORDANCE WITH APPLICABLE CONTRACTS OR AGREEMENTS All Rights Reserved Unpublished & not for Publication COPYRIGHT 1998 Lucent Technologies		
ADVANCED SERVICE NETWORK		
ADVANTAGE COMPACT SERVICE NODE		DWG SIZE C2
Lucent Technologies		ISSUE 1
SD-1S011-01		SHEET G2

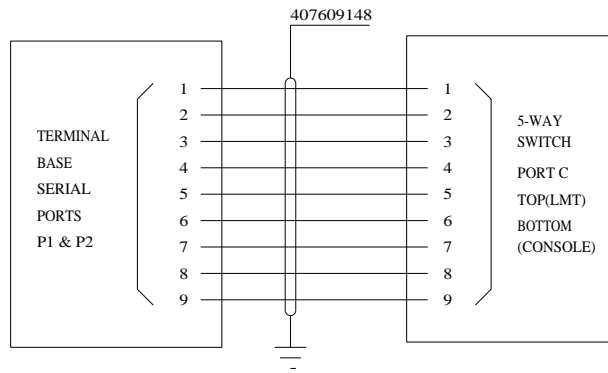
0 1 2 3 4 5 6 7 8 9

A A

CAD6

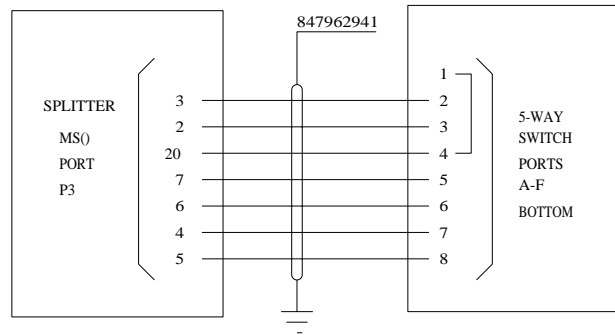


CAD9

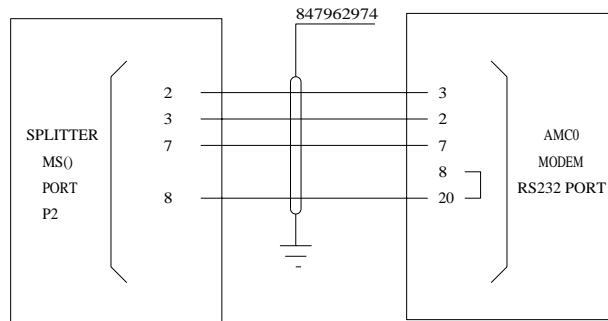


B B

CAD7

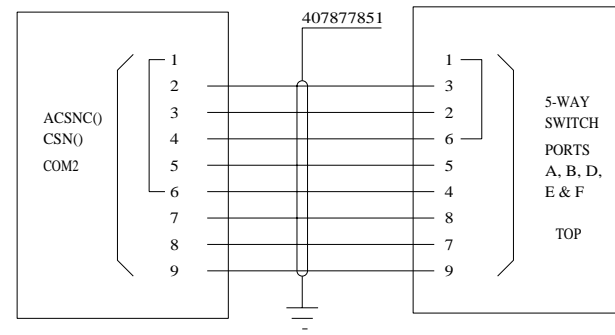


CAD10

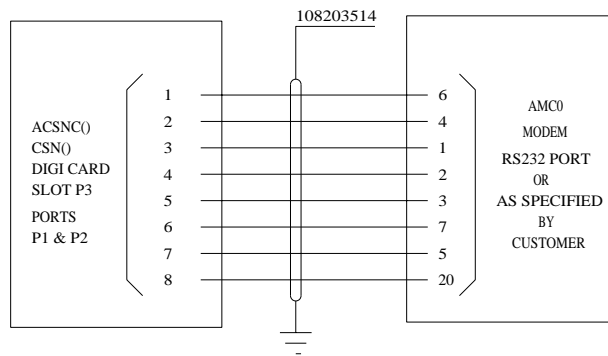


D D

CAD8



CAD11



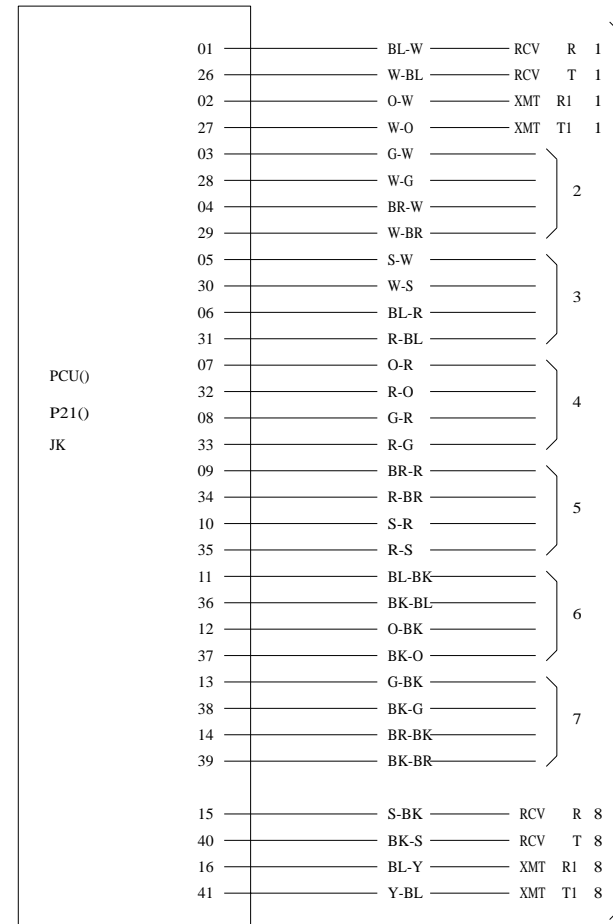
F F

H H

<p>LUCENT TECHNOLOGIES - PROPRIETARY THIS DOCUMENT CONTAINS PROPRIETARY INFORMATION OF LUCENT TECHNOLOGIES AND IS NOT TO BE DISCLOSED OR USED EXCEPT IN ACCORDANCE WITH APPLICABLE CONTRACTS OR AGREEMENTS All Rights Reserved Unpublished & not for Publication COPYRIGHT 1998 Lucent Technologies</p>		
<p>ADVANCED SERVICE NETWORK</p>		
<p>ADVANTAGE COMPACT SERVICE NODE</p>		<p>DWG SIZE C2</p>
<p>Lucent Technologies</p>		<p>ISSUE 1</p>
<p>SD-1S011-01</p>		<p>SHEET G3</p>

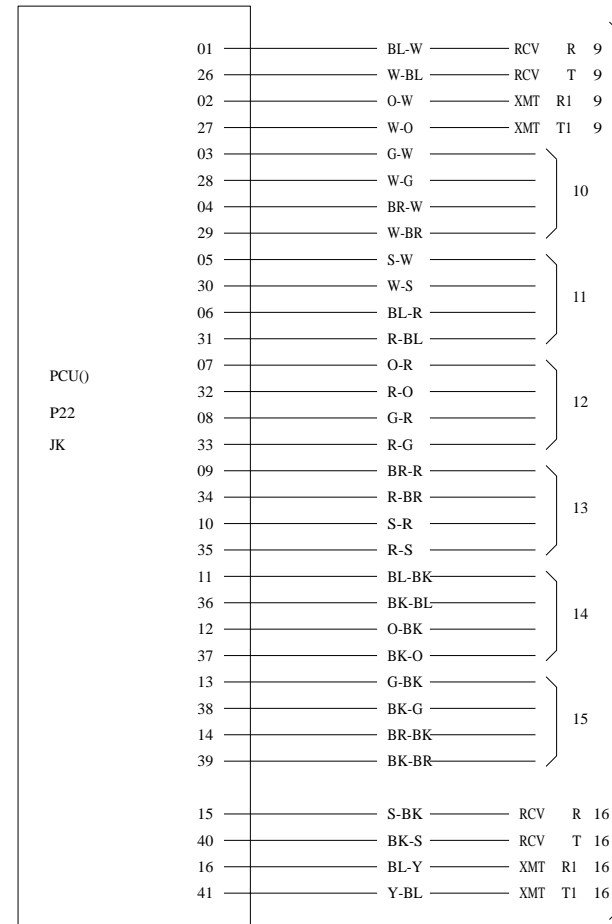
0 1 2 3 4 5 6 7 8 9

CAD12

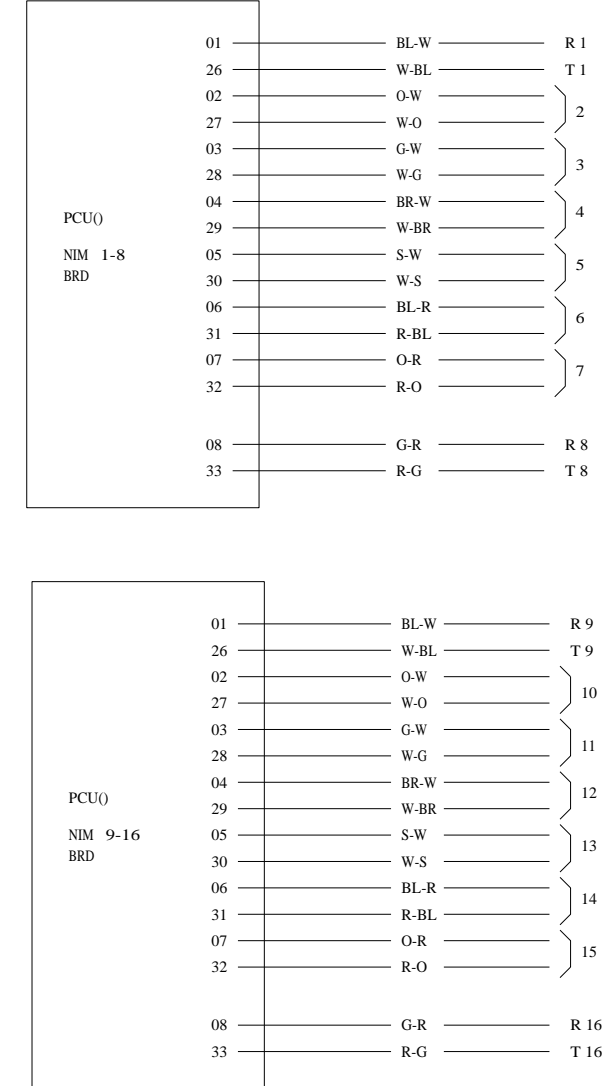


TO DF
NOTE1

CAD13



TO DF
NOTE1

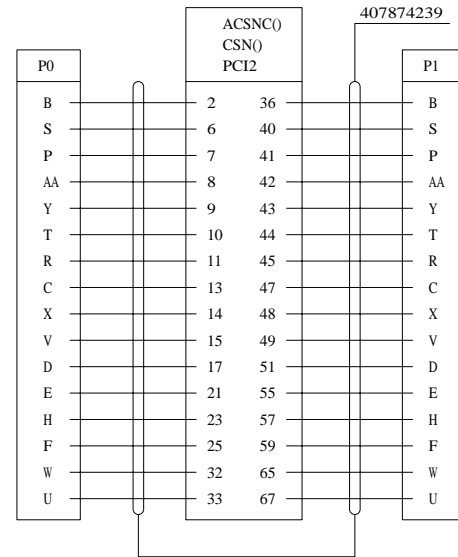


TO DF
NOTE1

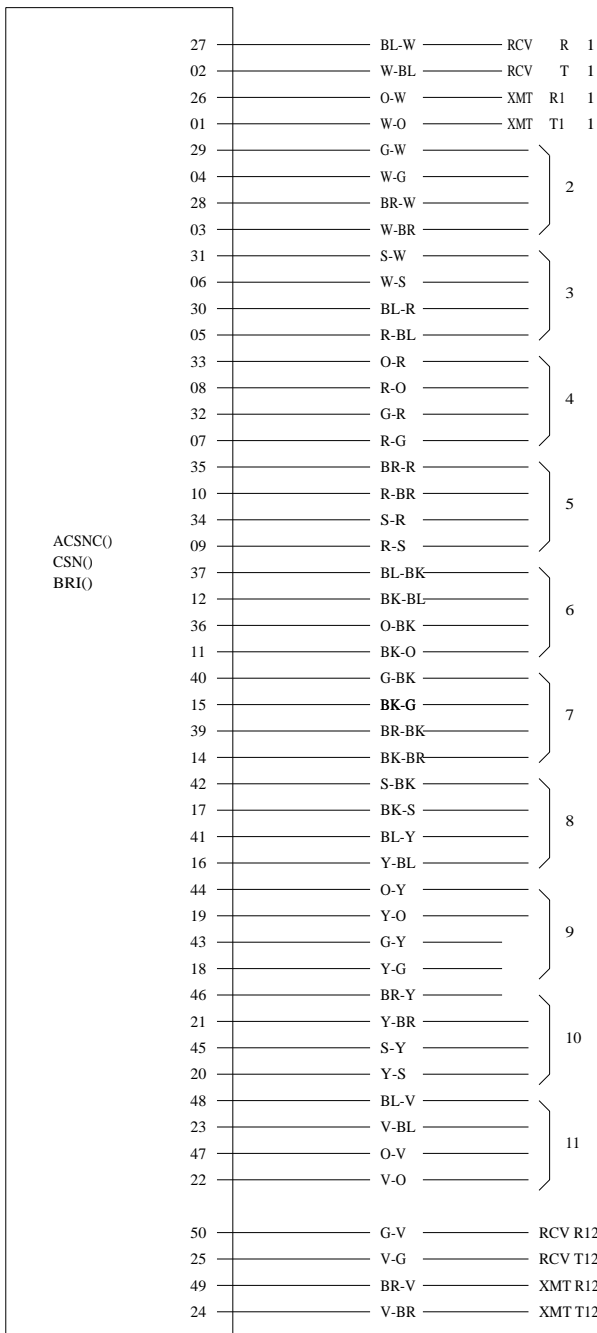
SHEET NOTES:
1. FOR CABLING USE 103711453 (460FT) OR 102451523 (200FT) CABLES.

LUCENT TECHNOLOGIES - PROPRIETARY THIS DOCUMENT CONTAINS PROPRIETARY INFORMATION OF LUCENT TECHNOLOGIES AND IS NOT TO BE DISCLOSED OR USED EXCEPT IN ACCORDANCE WITH APPLICABLE CONTRACTS OR AGREEMENTS <small>All Rights Reserved Unpublished & not for Publication COPYRIGHT 1998 Lucent Technologies</small>		
ADVANCED SERVICE NETWORK		
ADVANTAGE COMPACT SERVICE NODE	DWG SIZE C2	ISSUE 1
Lucent Technologies	SD-1S011-01	SHEET G4

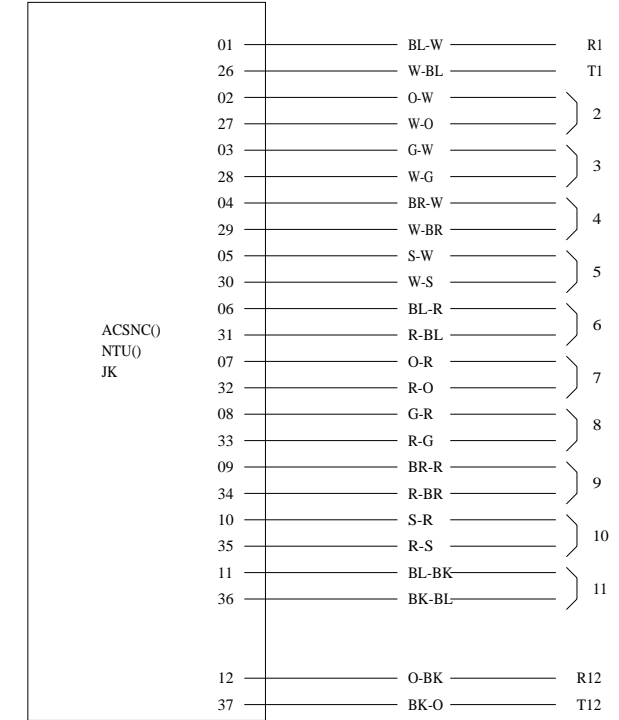
CAD14



CAD15



CAD16



NOTES:
 1. USE CABLE 108119983 OR 108243288
 2. USE CABLE 847963022 OR 848148102

TO DF
(T-INTERFACE)
NOTE1
(OPTION S)

TO DF
(U-INTERFACE)
NOTE2
(OPTION T)

LUCENT TECHNOLOGIES - PROPRIETARY THIS DOCUMENT CONTAINS PROPRIETARY INFORMATION OF LUCENT TECHNOLOGIES AND IS NOT TO BE DISCLOSED OR USED EXCEPT IN ACCORDANCE WITH APPLICABLE CONTRACTS OR AGREEMENTS All Rights Reserved Unpublished & not for Publication COPYRIGHT 1998 Lucent Technologies		
ADVANCED SERVICE NETWORK ADVANTAGE COMPACT SERVICE NODE	DWG SIZE	ISSUE
	C2	1
Lucent Technologies	SD-1S011-01	SHEET G5

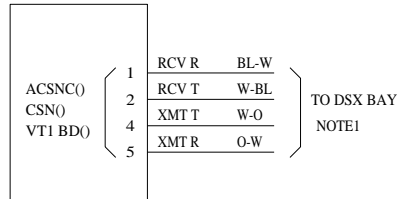
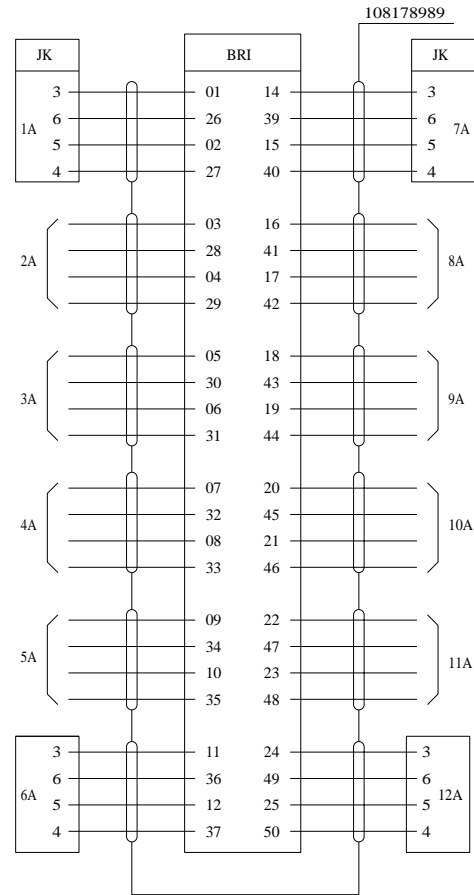
0 1 2 3 4 5 6 7 8 9

A A

CAD17

(OPTION T)

CAD18



NOTE1:
USE CABLE 847962990 OR 848148094

LUCENT TECHNOLOGIES - PROPRIETARY THIS DOCUMENT CONTAINS PROPRIETARY INFORMATION OF LUCENT TECHNOLOGIES AND IS NOT TO BE DISCLOSED OR USED EXCEPT IN ACCORDANCE WITH APPLICABLE CONTRACTS OR AGREEMENTS All Rights Reserved Unpublished & not for Publication COPYRIGHT 1998 Lucent Technologies		
ADVANCED NETWORK SERVICES		
ADVANTAGE COMPACT SERVICE NODE		DWG SIZE C2
Lucent Technologies		ISSUE 1
SD-1S011-01		SHEET G6

F F

G G

H H

0 1 2 3 4 5 6 7 8 9